

Kleihues + Kleihues

Architecture
Urban Planning
Interior Design
Landscape Planning
General Planning

www.kleihues.com

MADE UP AND MADE OVER

3 HOTELPROJEKTE IN BERLIN

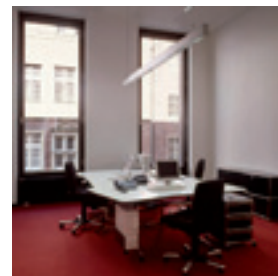
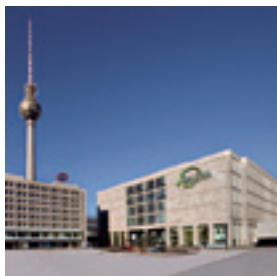
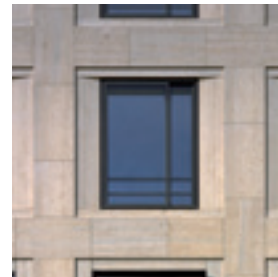
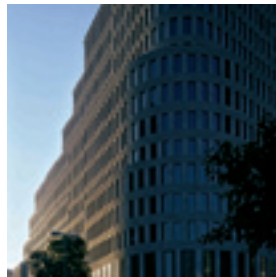
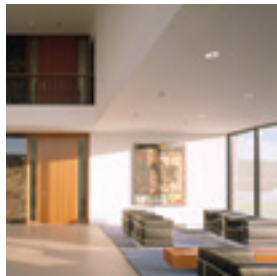
22.04.2016

Fraunhofer - Institut für Bauphysik IBP Stuttgart

Symposium „Unerhörte Hotels“

Vortrag Tobias Amme

Kleihues + Kleihues Berlin



- 1962 Gründung des Büros Josef P. Kleihues und H. H. Moldenscharadt in Berlin
- 1967 Gründung des Büros Josef P. Kleihues in Berlin
- 1973 Gründung des Zweitbüros Josef P. Kleihues in Dülmen-Rorup
- 1996 Gründung des Büros Kleihues + Kleihues Gesellschaft von Architekten mbH durch die Gesellschafter Josef P. Kleihues, Jan Kleihues und Norbert Hensel.

Nach dem Tod von Josef Paul Kleihues im Sommer 2004 führen Jan Kleihues und Norbert Hensel das Büro fort.

Michael Alshut ist seit 2006 Partner. Johannes Kressner ist seit 2010 Partner. Assoziierter Partner ist seit 2008 Götz Kern.



Berlin
Helmholtzstraße 42



Dülmen-Rorup (NRW)
Holsterbrink 12

Oslo/ Norwegen
Victoria Terrassen
Haus 2

Berlin
Rosenstraße 17

Berlin
Chausseestraße 87



Tobias Amme

Dipl.-Ing.
-Architekt

*1966 in Braunschweig

Projektleitung
Projektauswahl

1985-1992 Studium an der TU Braunschweig,
Diplom bei Prof. Meinhard von Gerkan

1987-1992 Mitarbeit Büro Gerd Lindemann,
Peter Eisenman Architects, New York

1992-2002 Mitarbeit im Büro Prof. Hans Kollhoff
Büroleitung (kaufmännische Projektlei-
tung, Akquise u.a.), Projektleitung

2002-2005 KSP Engel und Zimmermann Architekten
Leitung der Niederlassung Berlin
(kaufmännische Projektleitung, Personal,
Akquise u.a.), Projektleitung

seit 2005 Mitarbeit Kleihues + Kleihues Architekten
Projektleitung

seit 2008 DGNB Consultant

Qualifikationen Projektleiter

- 24 Jahre Berufserfahrung



Dienstgebäude und Hauptzentrale des
Bundesnachrichtendienstes
Berlin
2006 - 2016



Ku'damm Karree
Berlin
2015/ 2016



Hans Kollhoff:
Auswärtiges Amt
Berlin
1995 - 2000

MADE UP AND MADE OVER



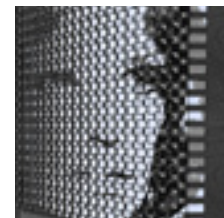
MADE UP (1) - MARITIM HOTEL BERLIN

MADE UP (2) - CONCORDE HOTEL BERLIN



MADE UP (3) - H10 HOTEL BERLIN

MADE OVER - SOFITEL HOTEL BERLIN

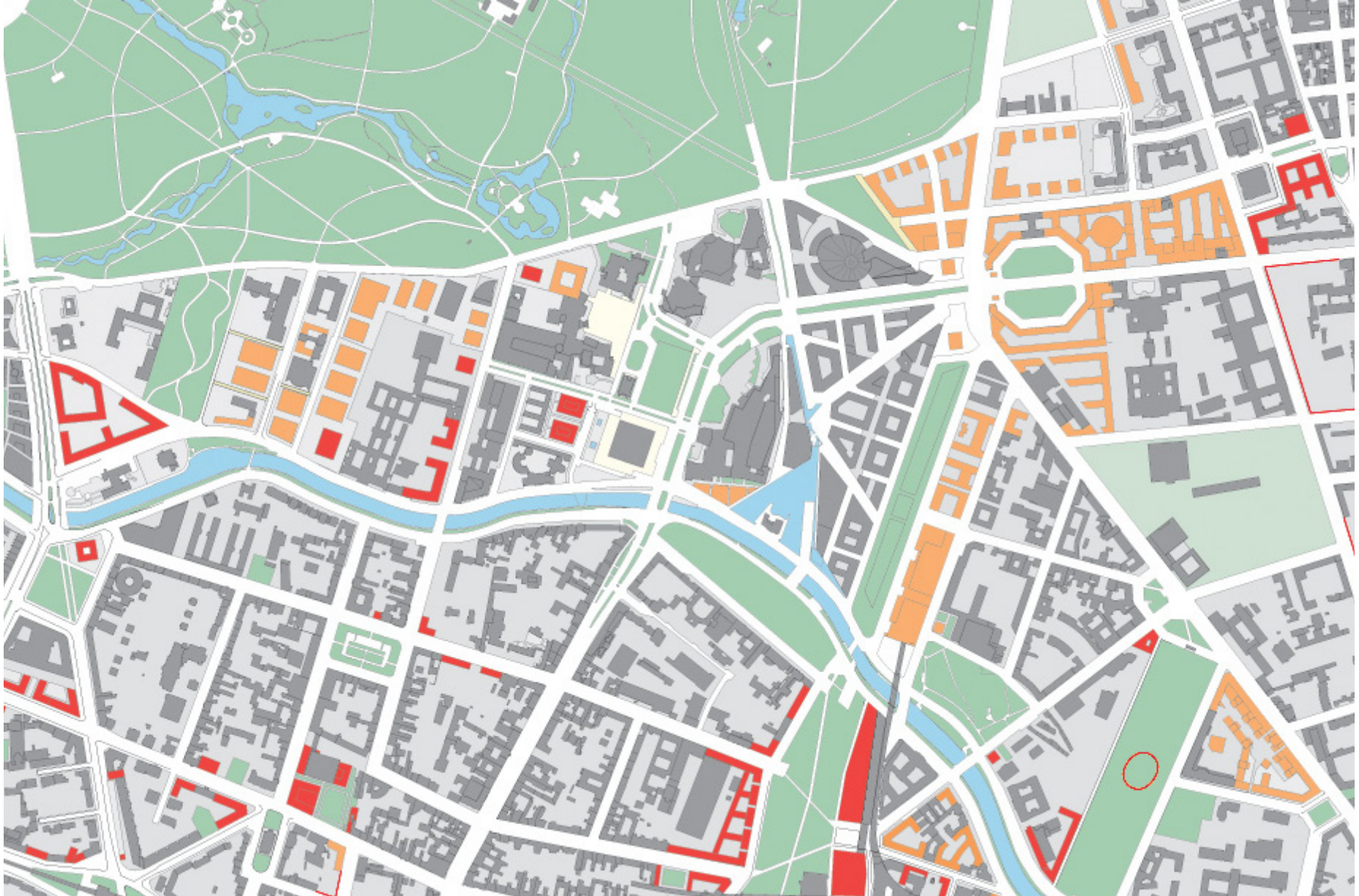




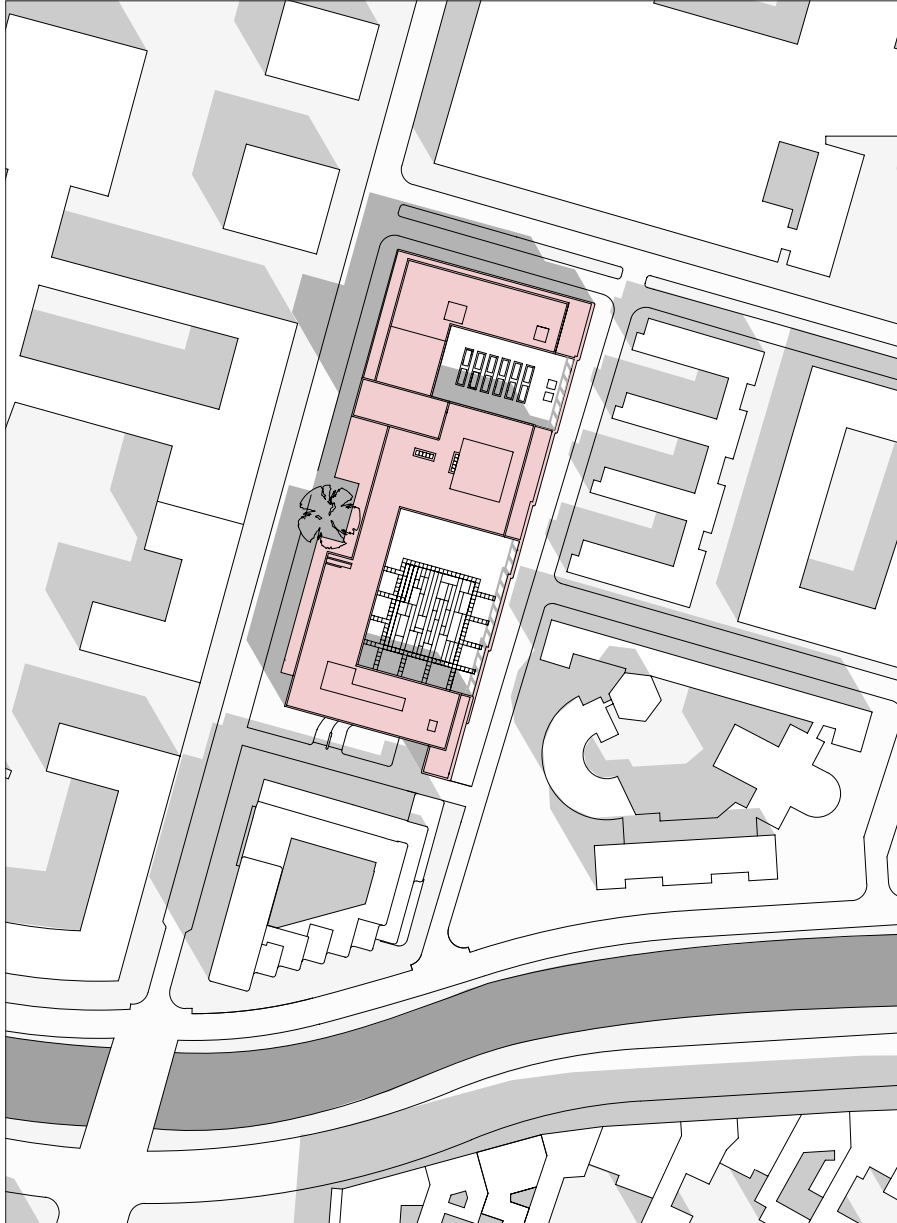
MADE UP (1) - MARITIM HOTEL BERLIN









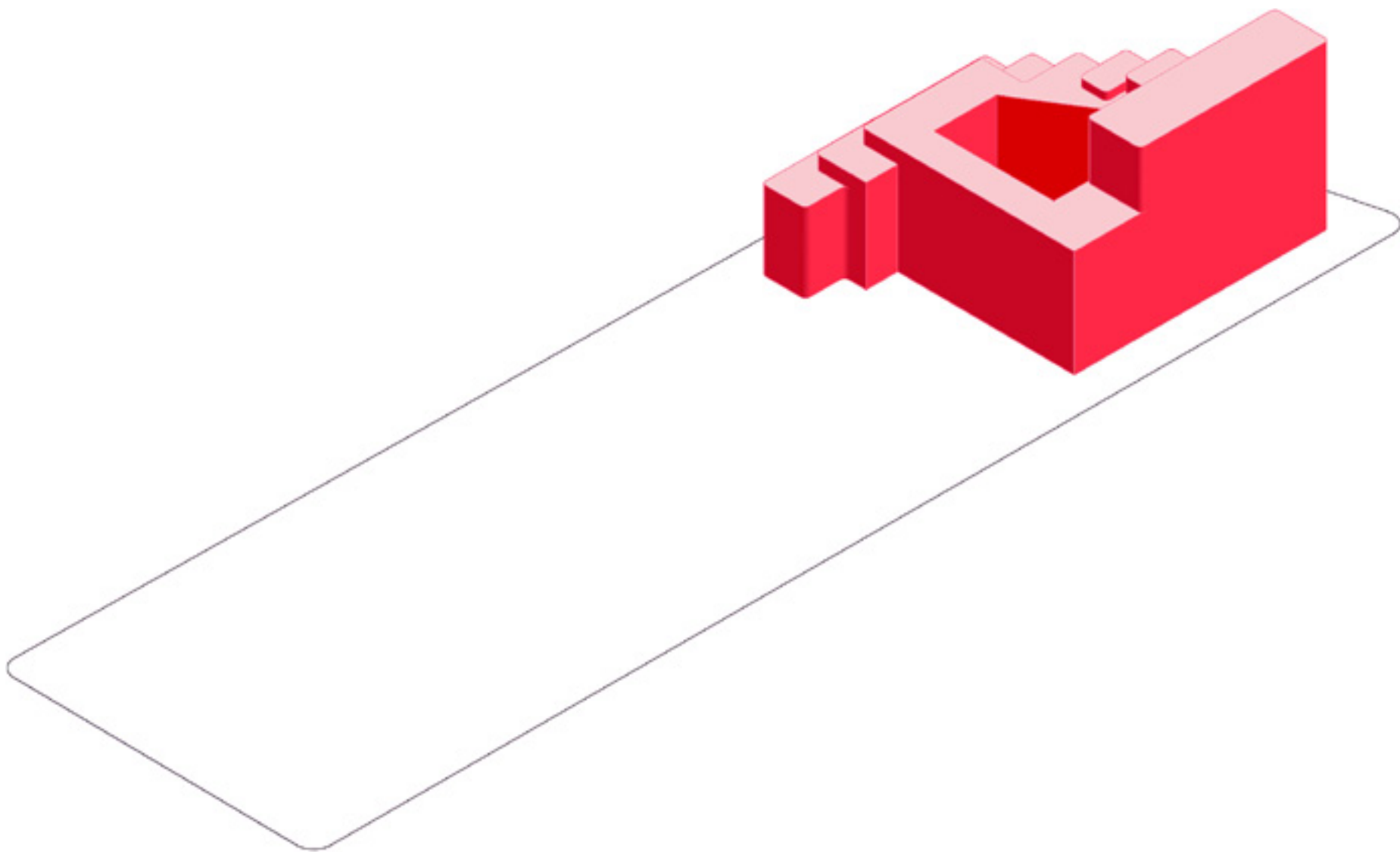


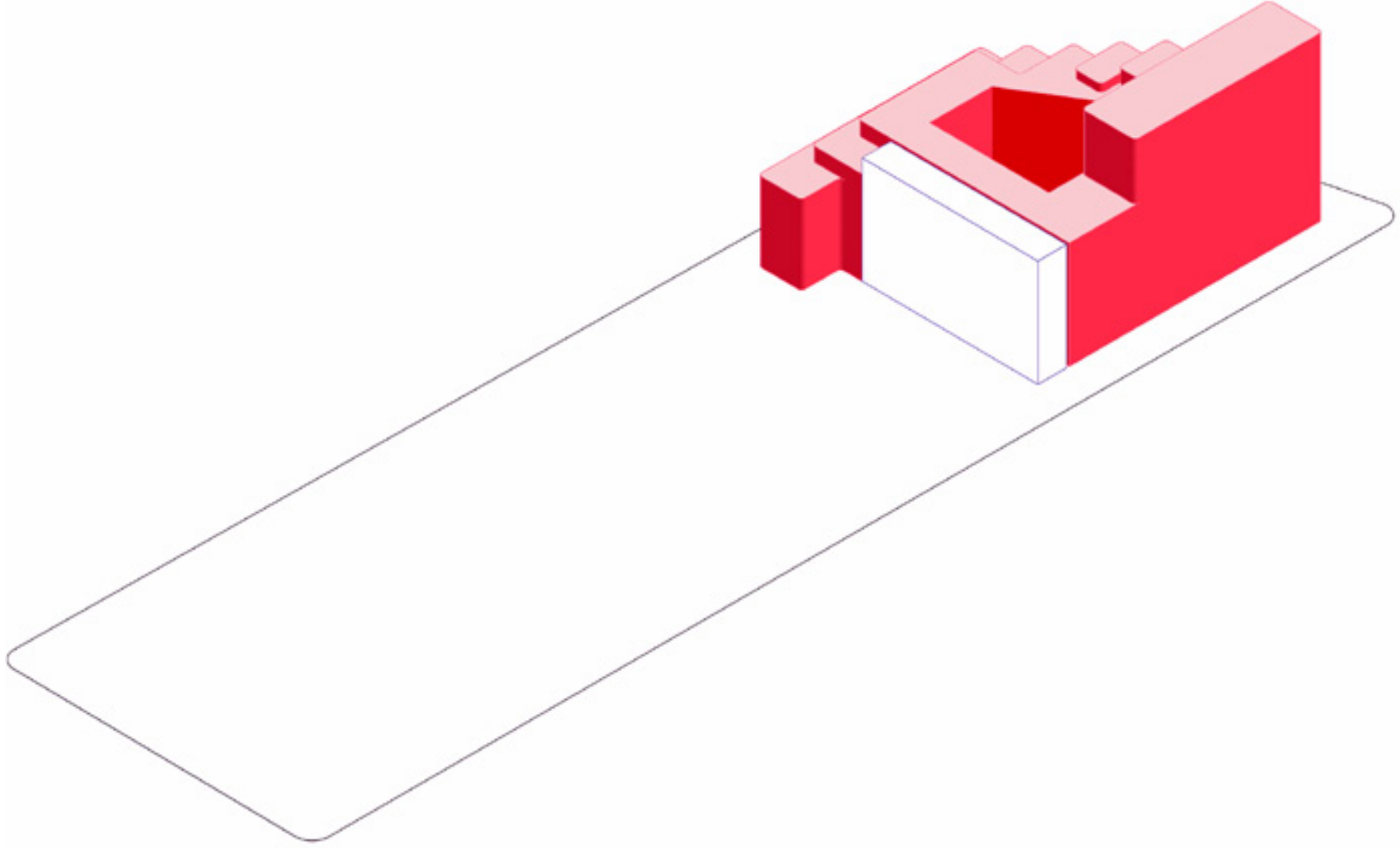
Adresse	Stauffenbergstrasse 26, 10785 Berlin
Realisierung	2003 - 2005
Baukosten	100 Mio. €
BGF	65.000 m ²
Nutzung	4-Sterne-Plus Hotel mit Kongresszentrum und Tiefgarage (1000 Betten)

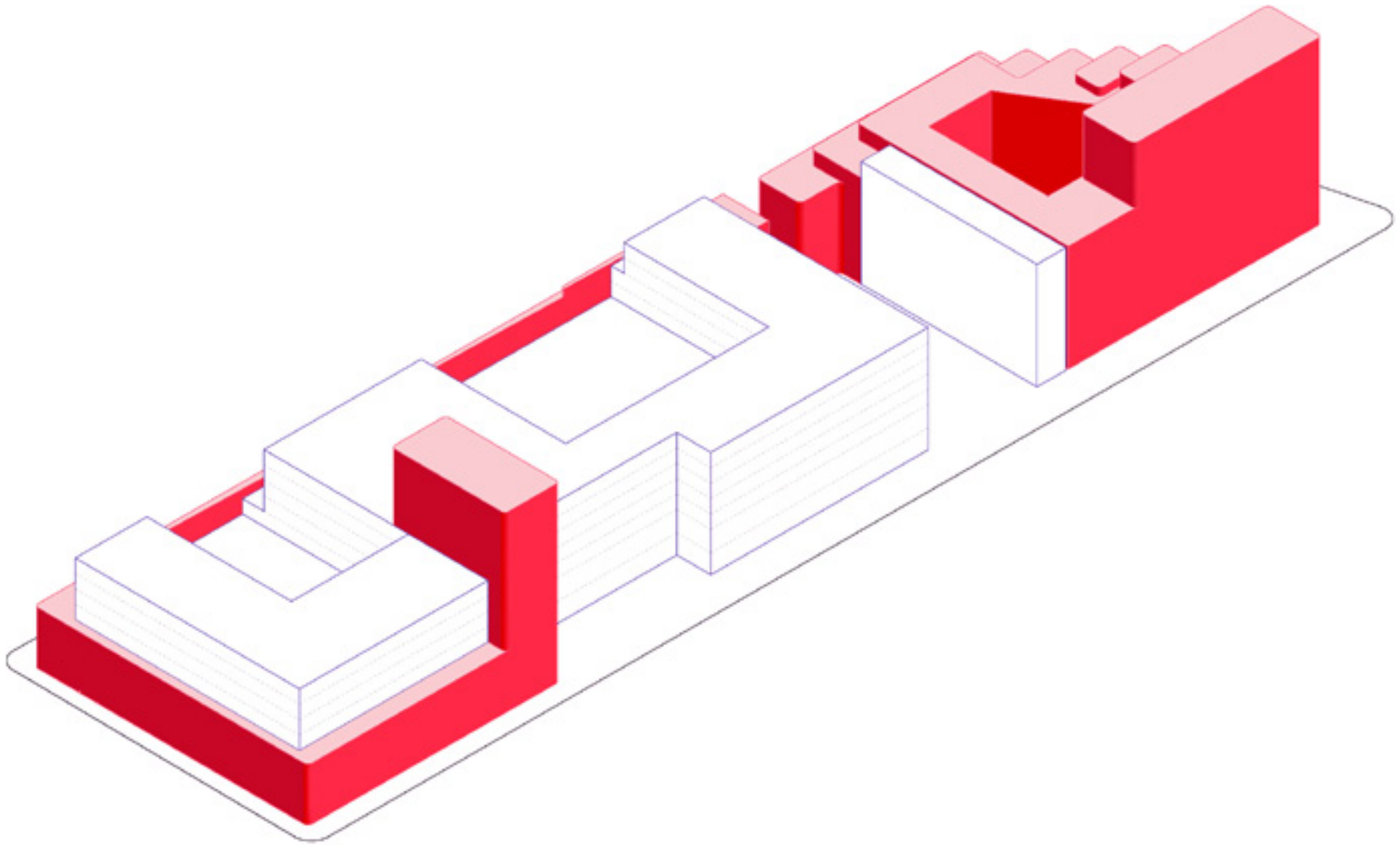
MADE UP AND MADE OVER
Maritim Kongress Hotel Berlin

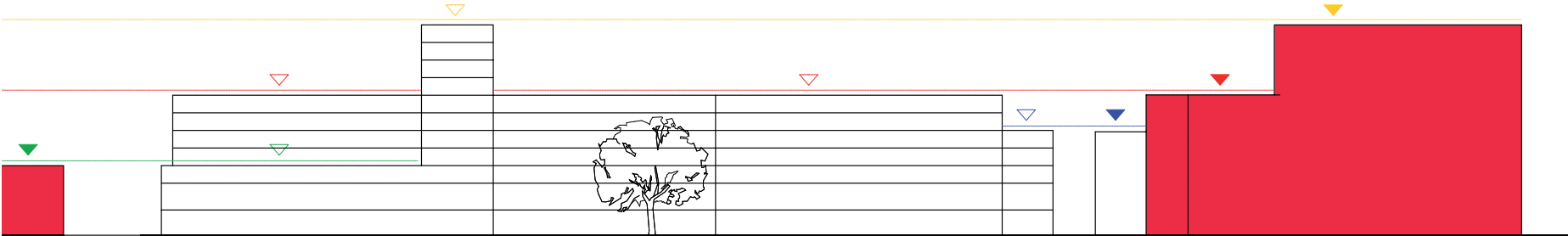
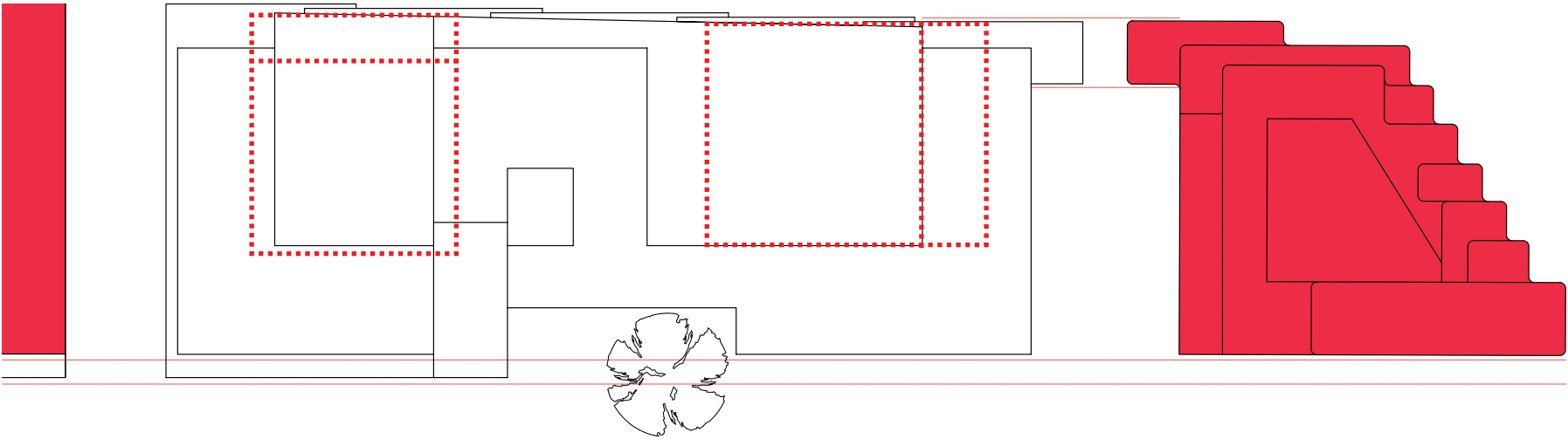
Kleihues + Kleihues













Gemälde-Galerie



Shellhaus



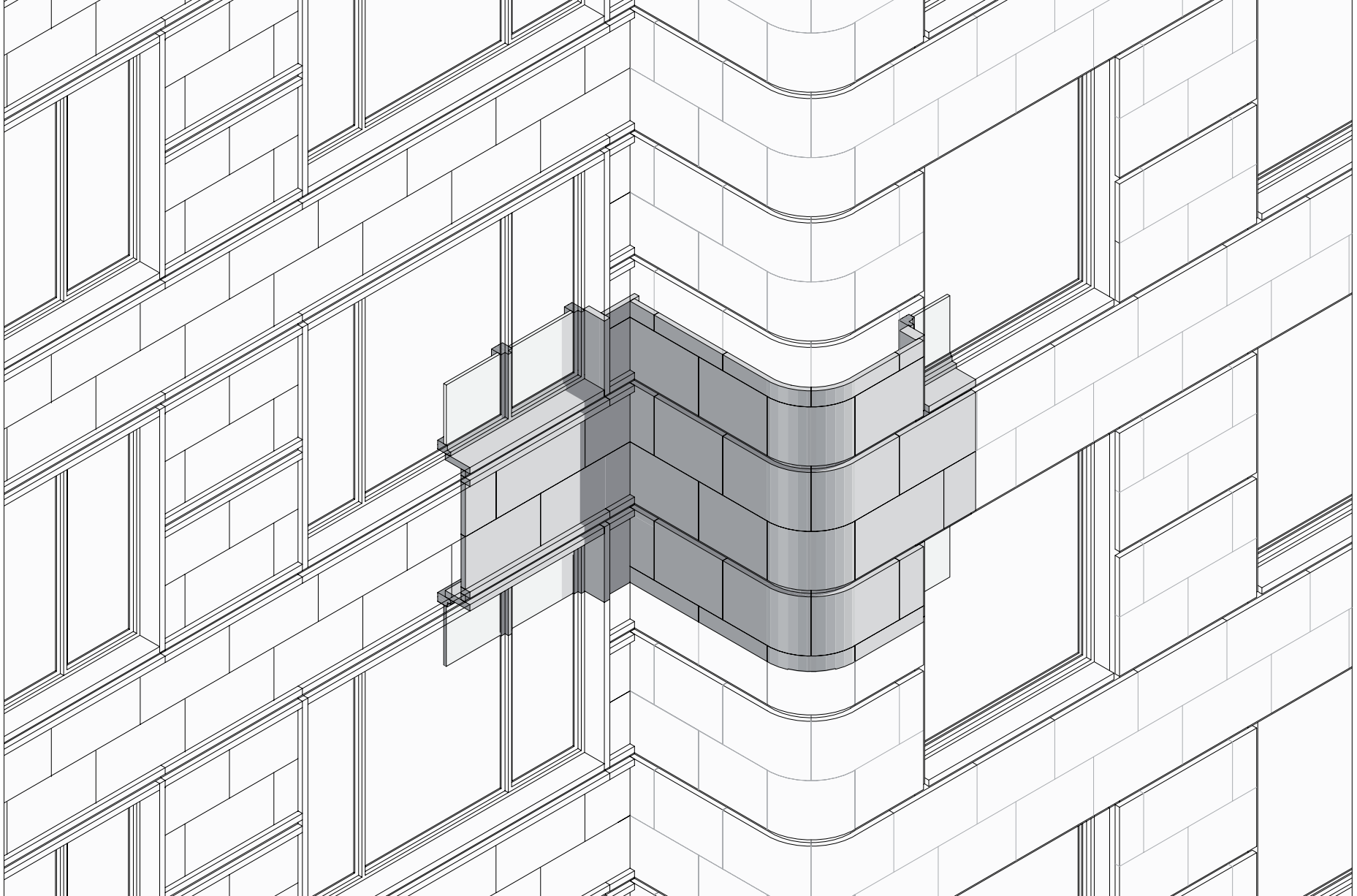
Bendler-Block

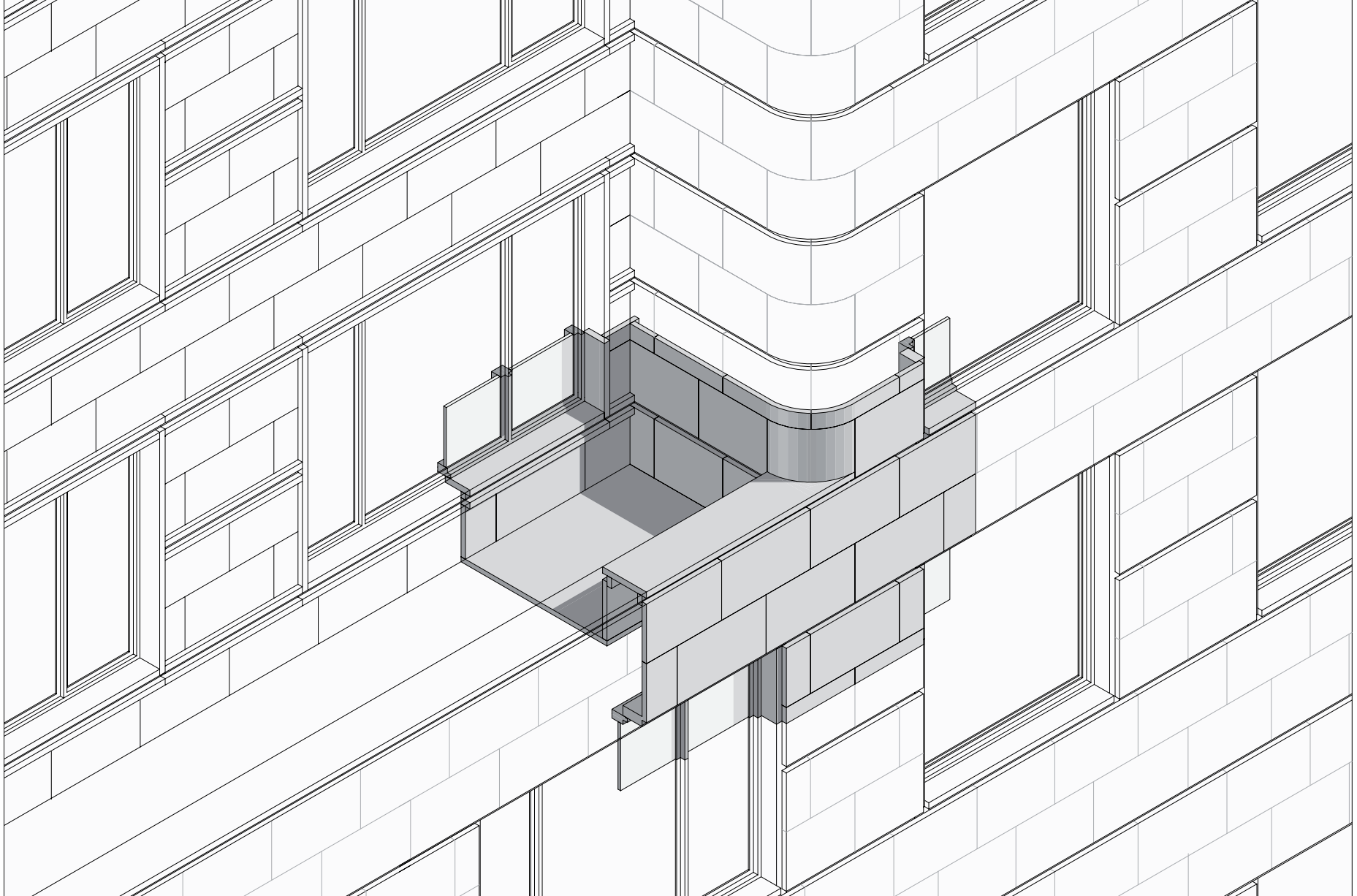


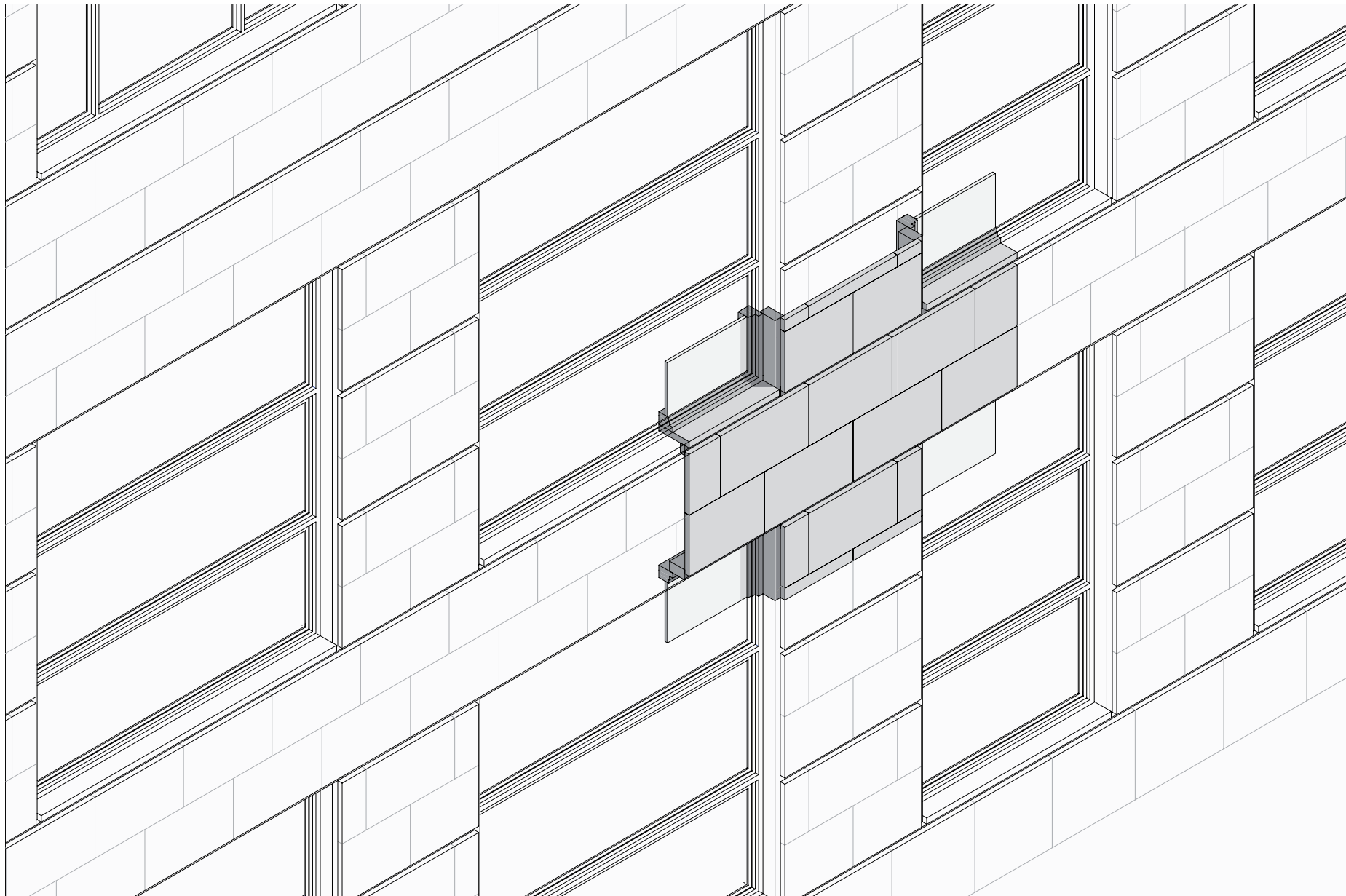
Wissenschaftszentrum Berlin















MADE UP AND MADE OVER
Maritim Kongress Hotel Berlin

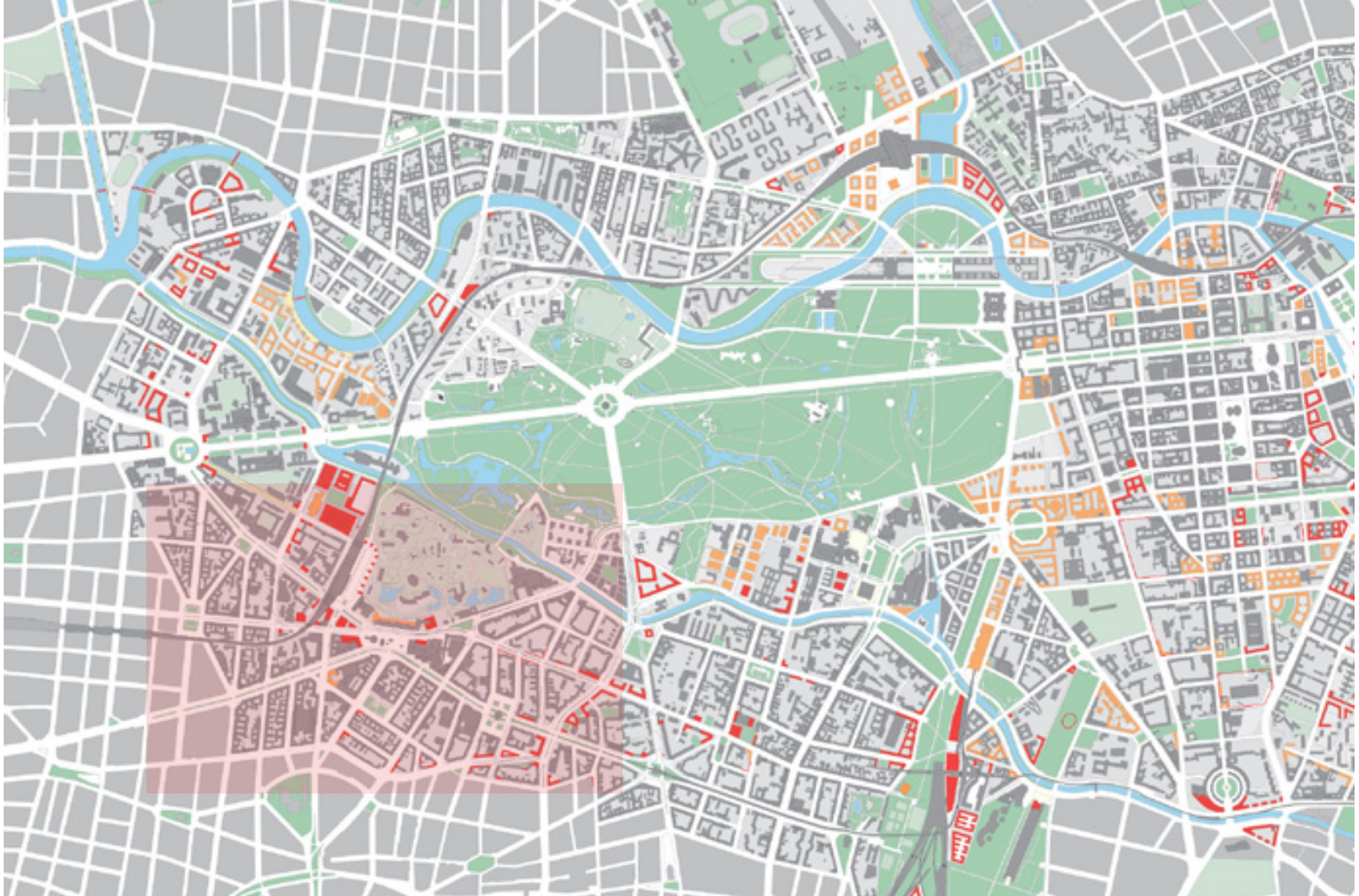
Kleihues + Kleihues





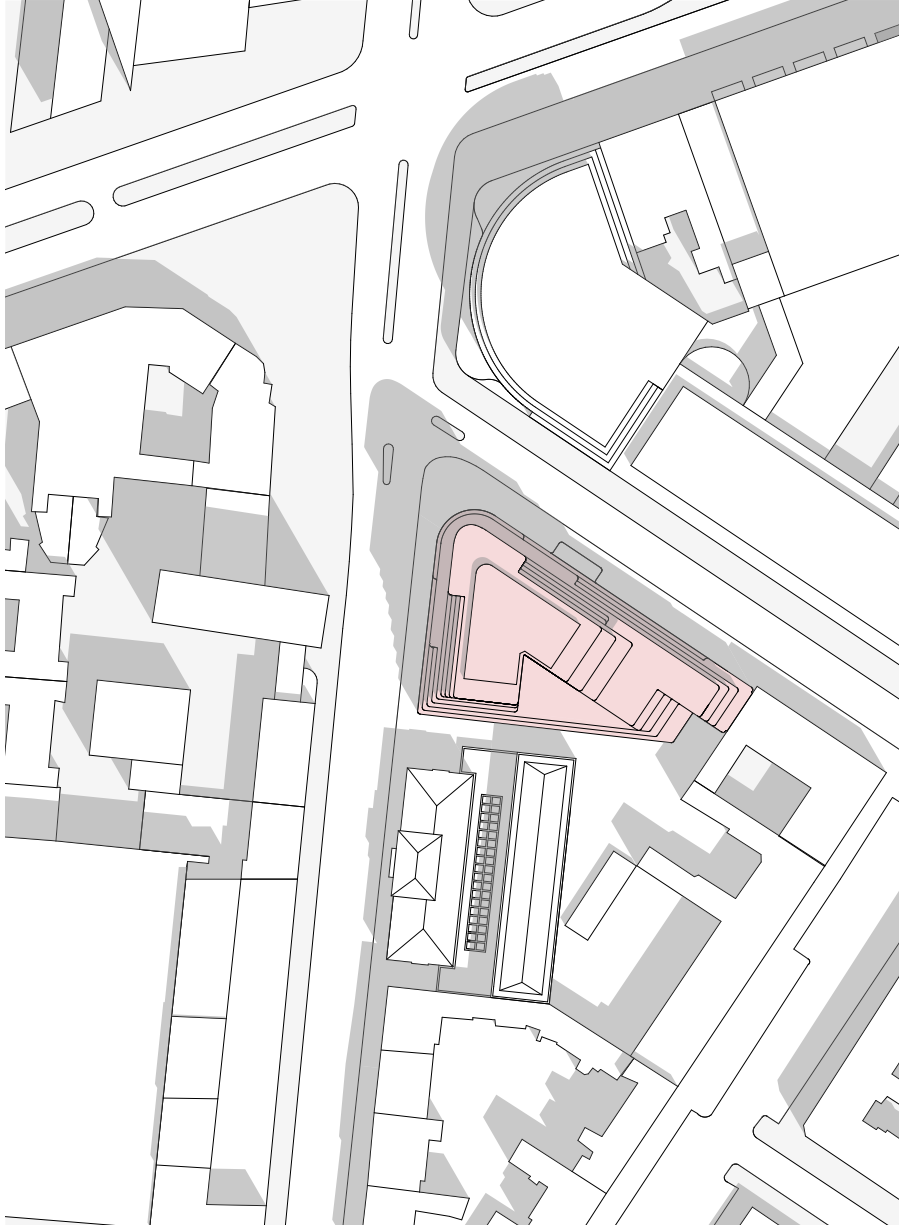
MADE UP (2) - CONCORDE HOTEL BERLIN



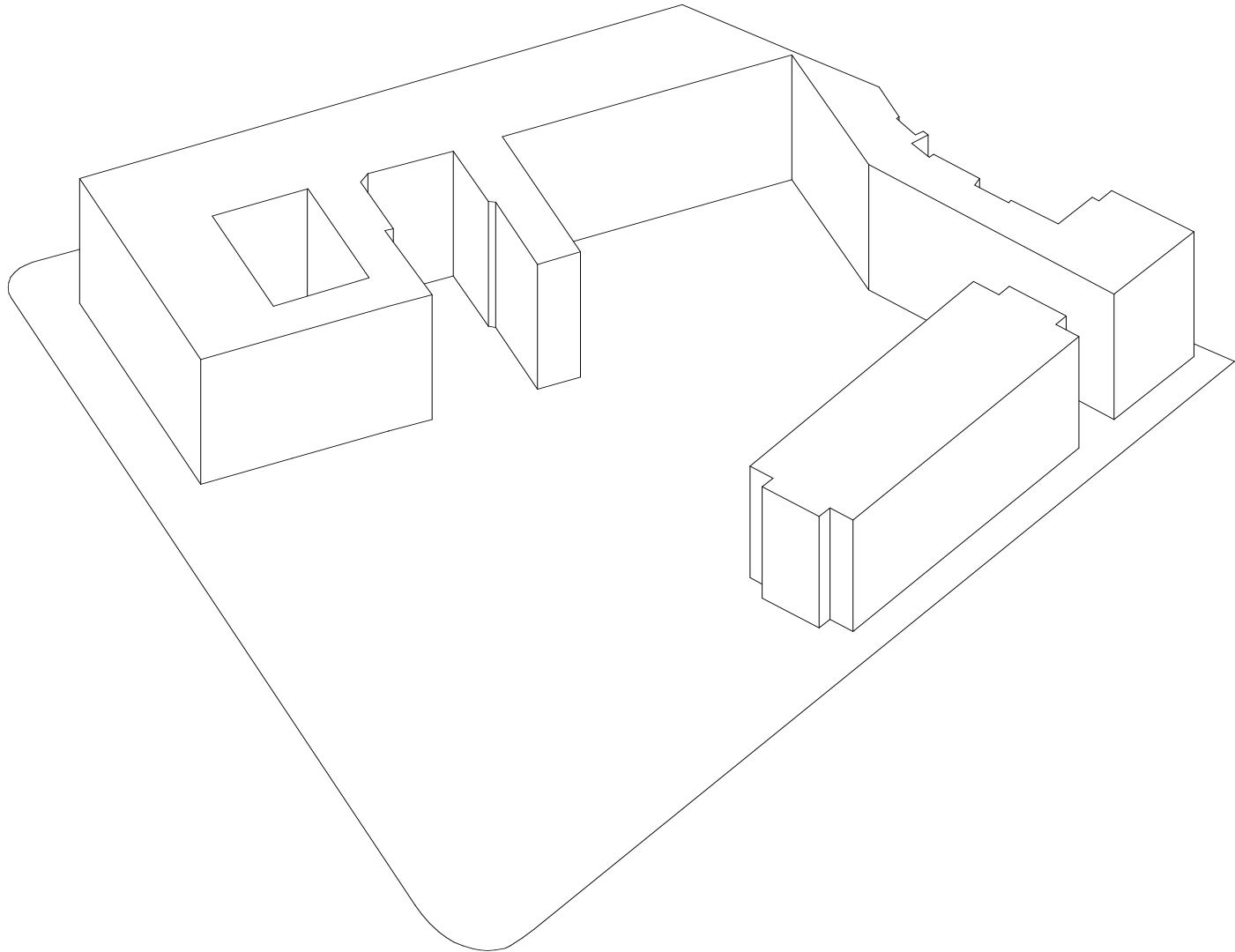


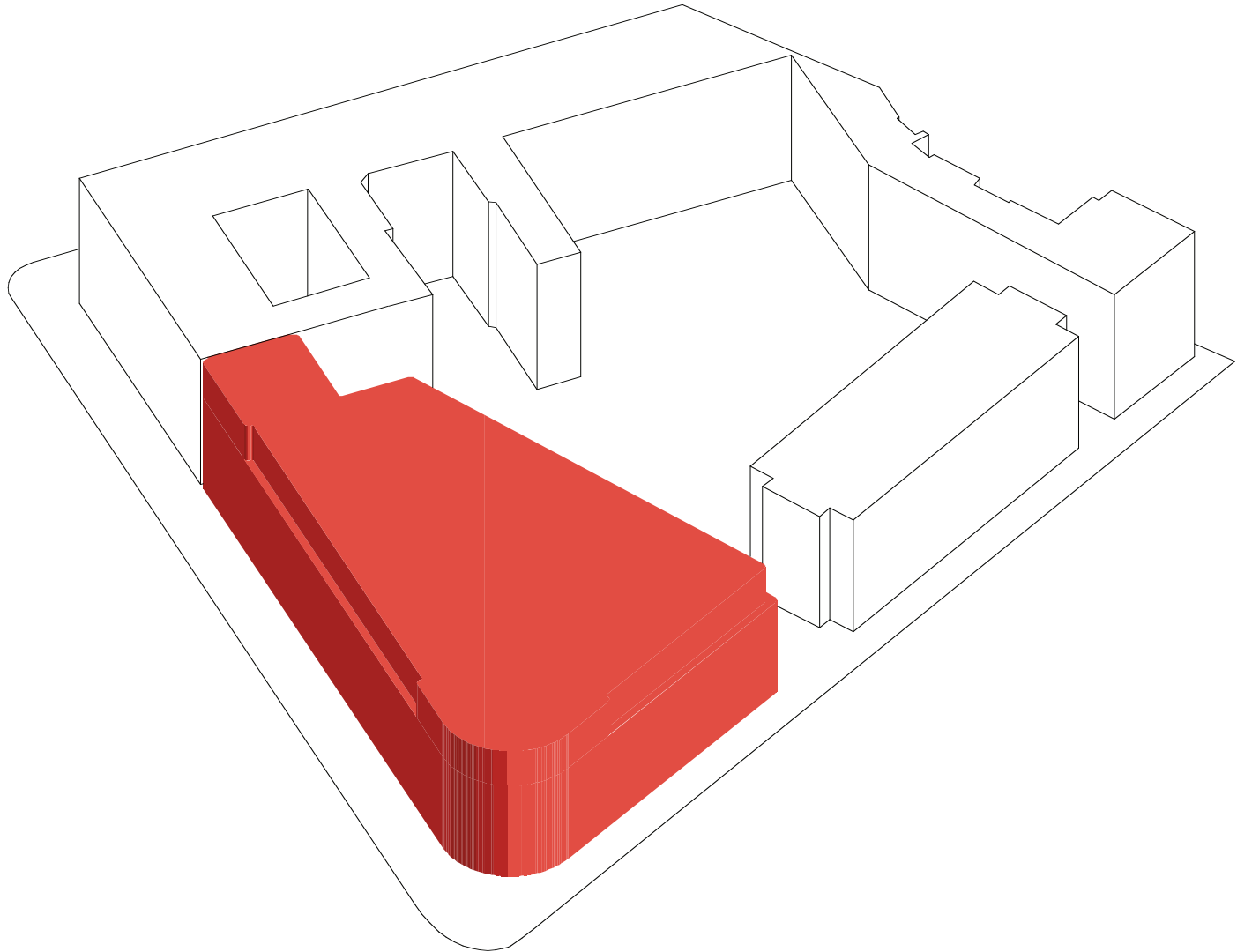


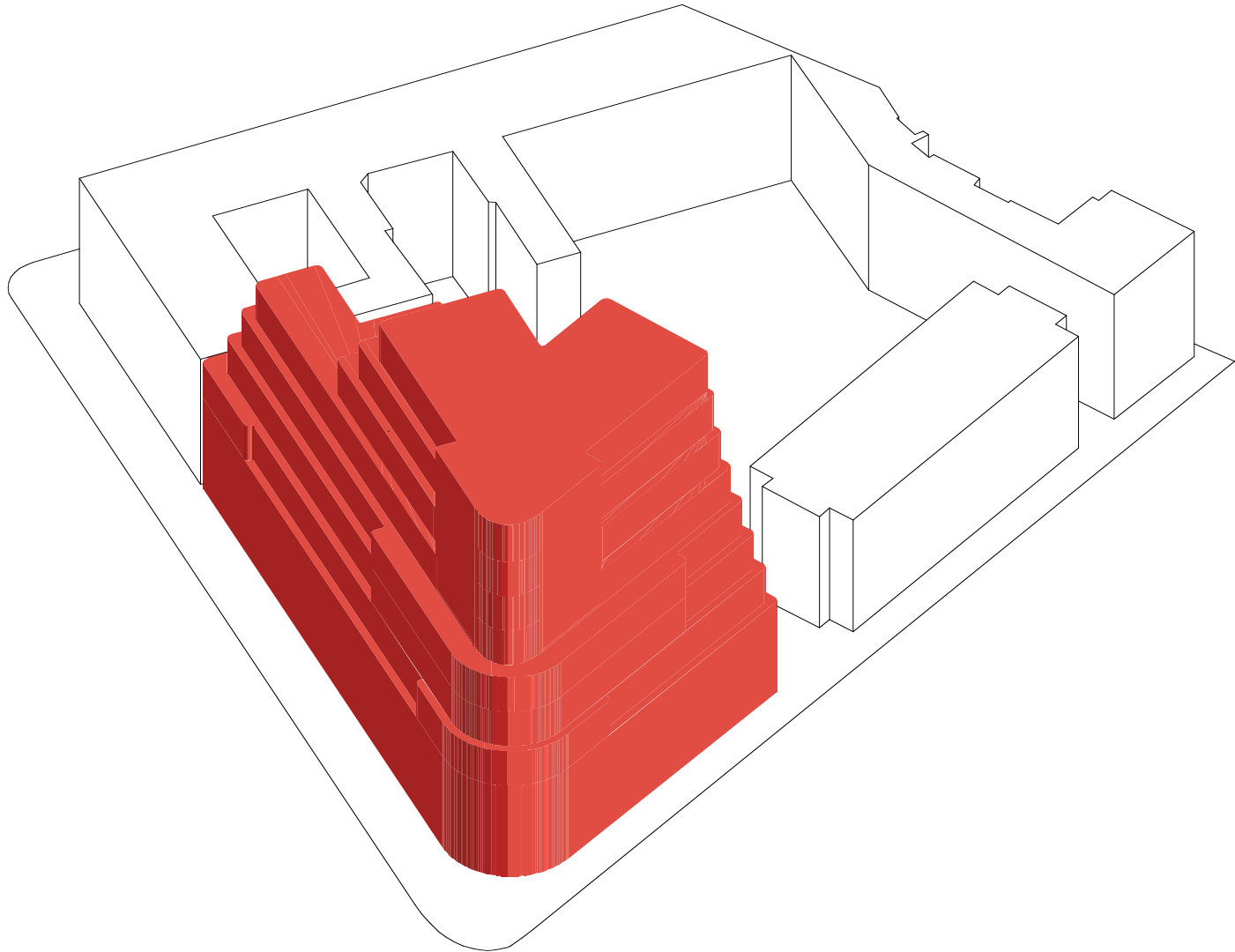


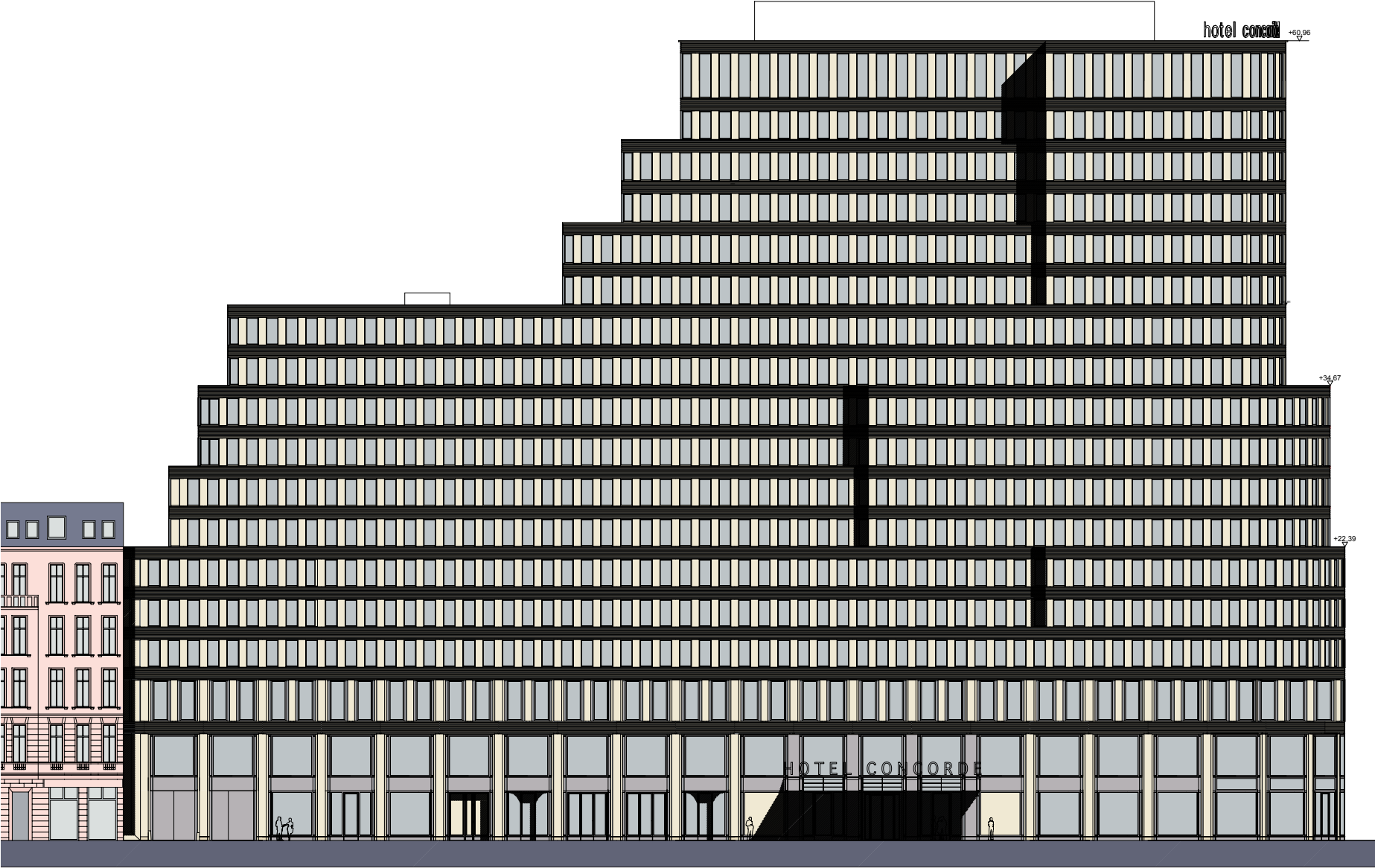


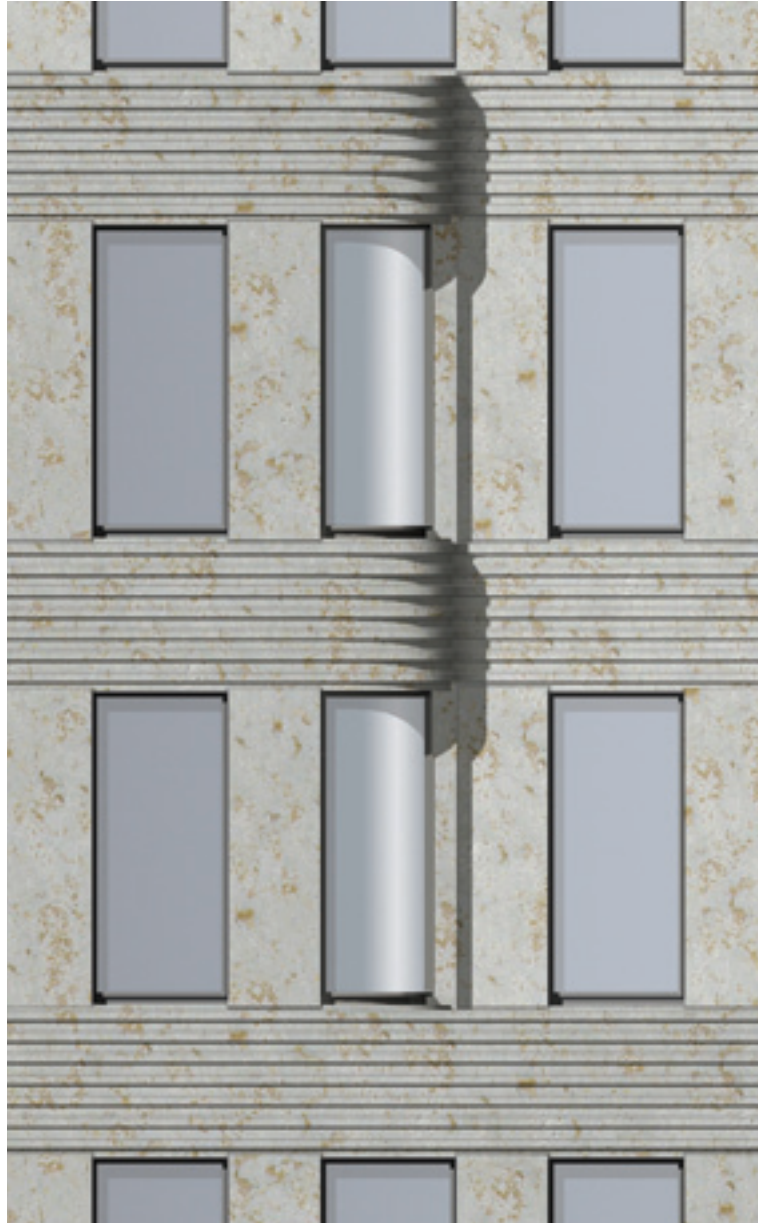
Planung	1999
Realisierung	2002-2005
Baukosten	67,5 Mio. Euro
Grundstück	4.530 qm
BGF	45.000 qm
Nutzung	5 Sterne Hotel mit 311 Zimmern, Bankettsaal, Konferenzräumen, Restaurant, Wellnessbereich, Bar sowie Büroflächen, Wohneinheiten, Läden und Tiefgarage



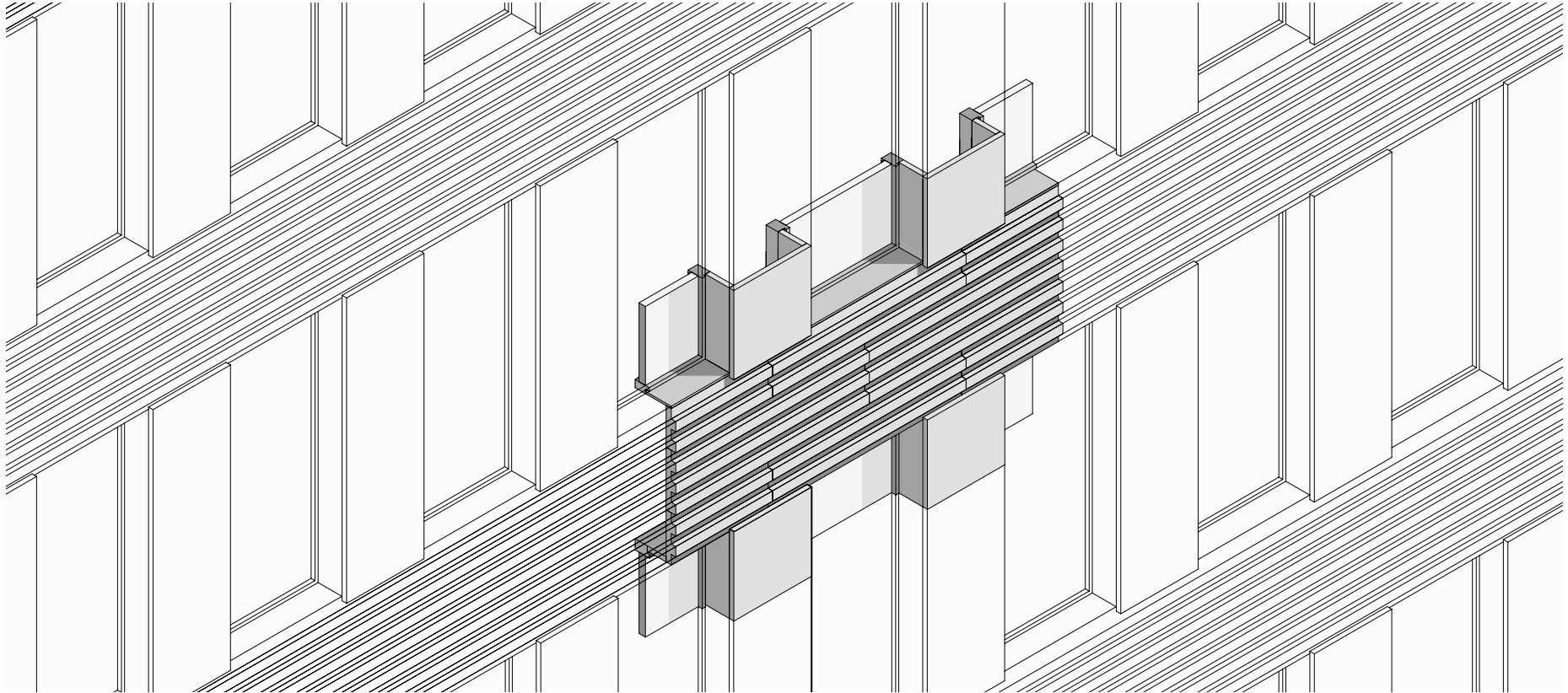


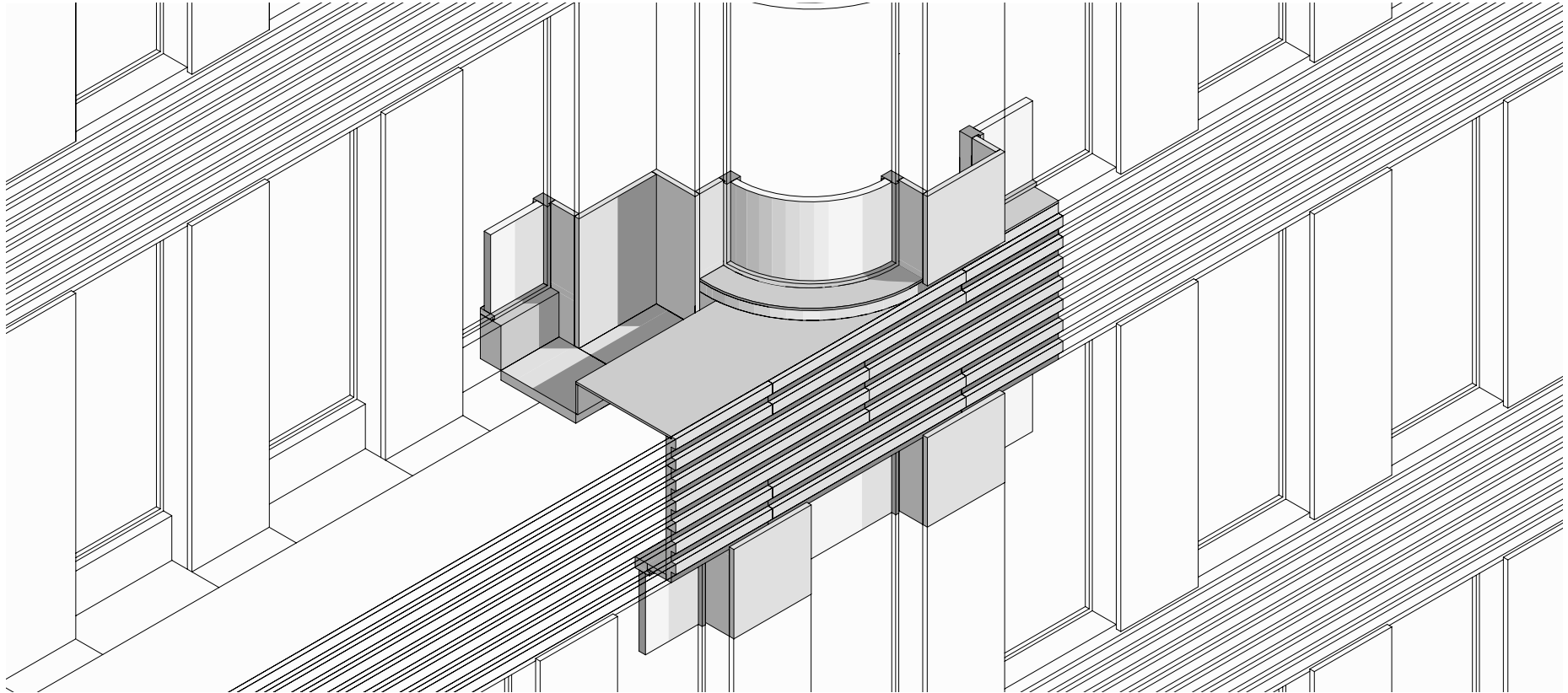


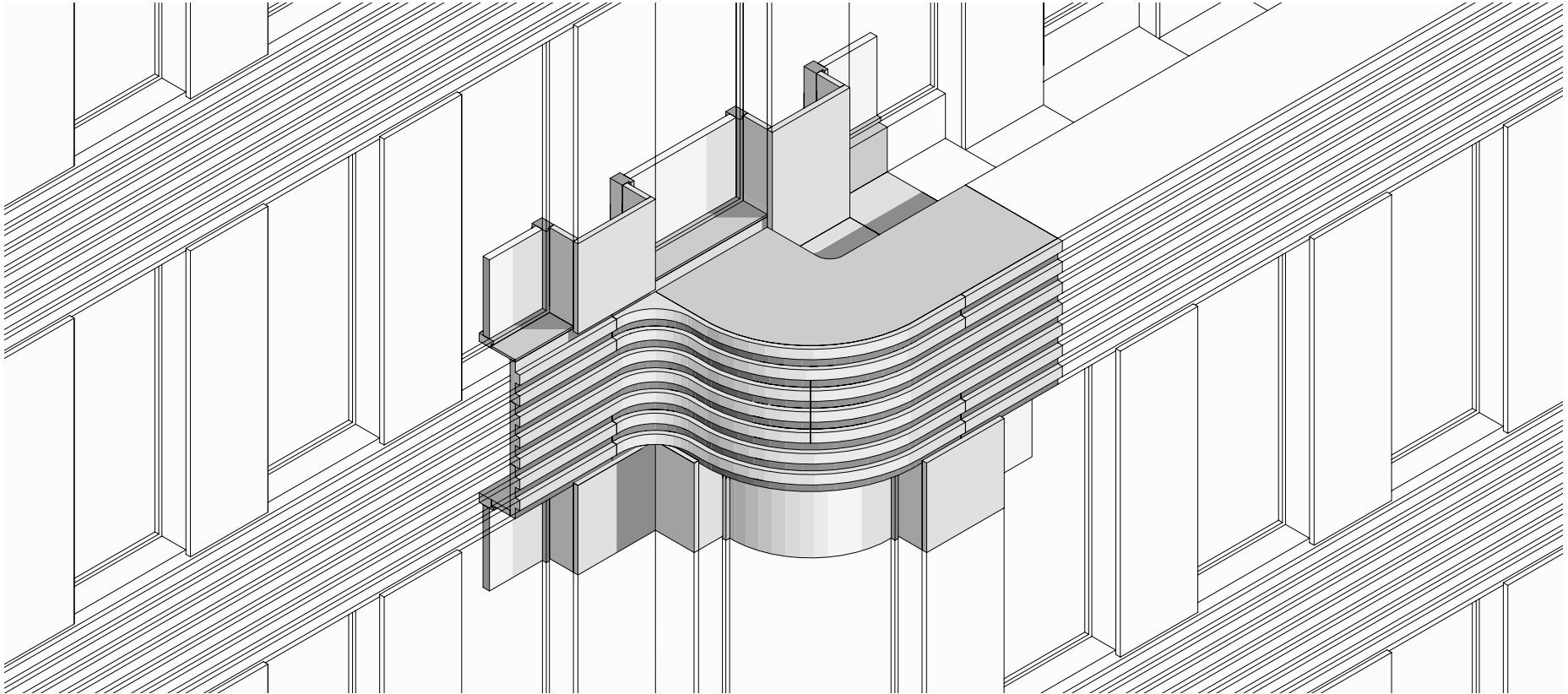












MADE UP AND MADE OVER
Concorde Hotel Berlin

Kleihues + Kleihues





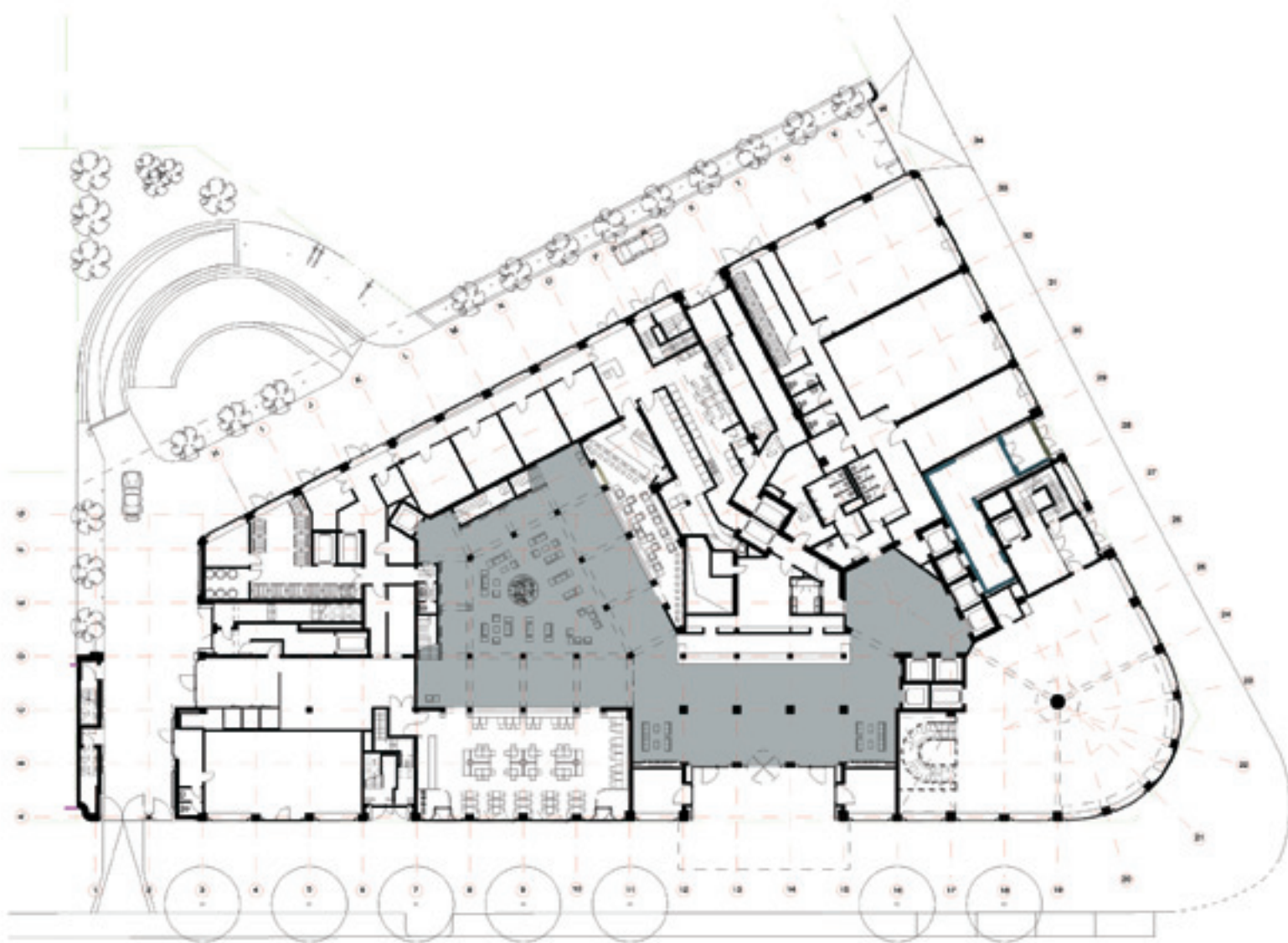


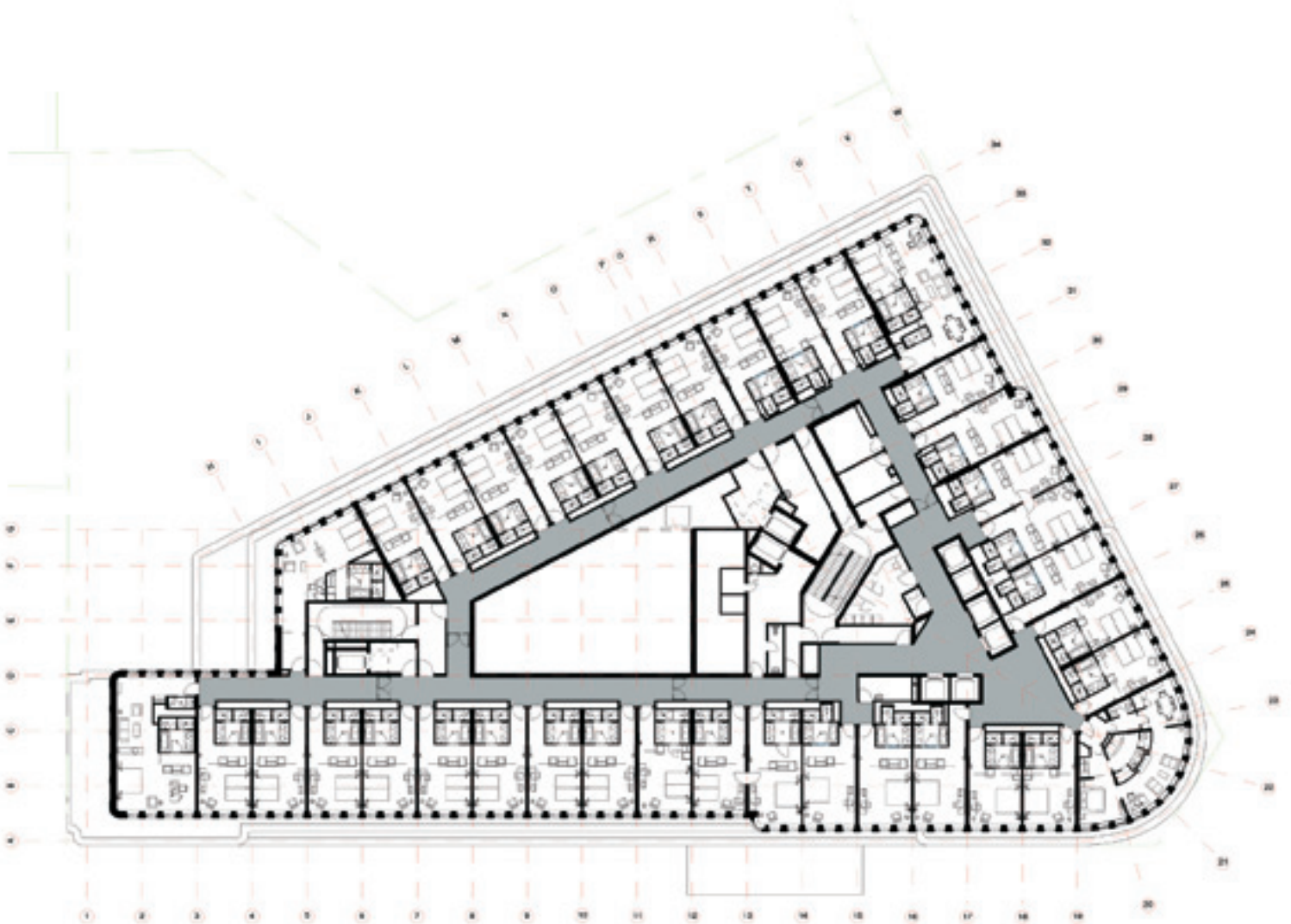






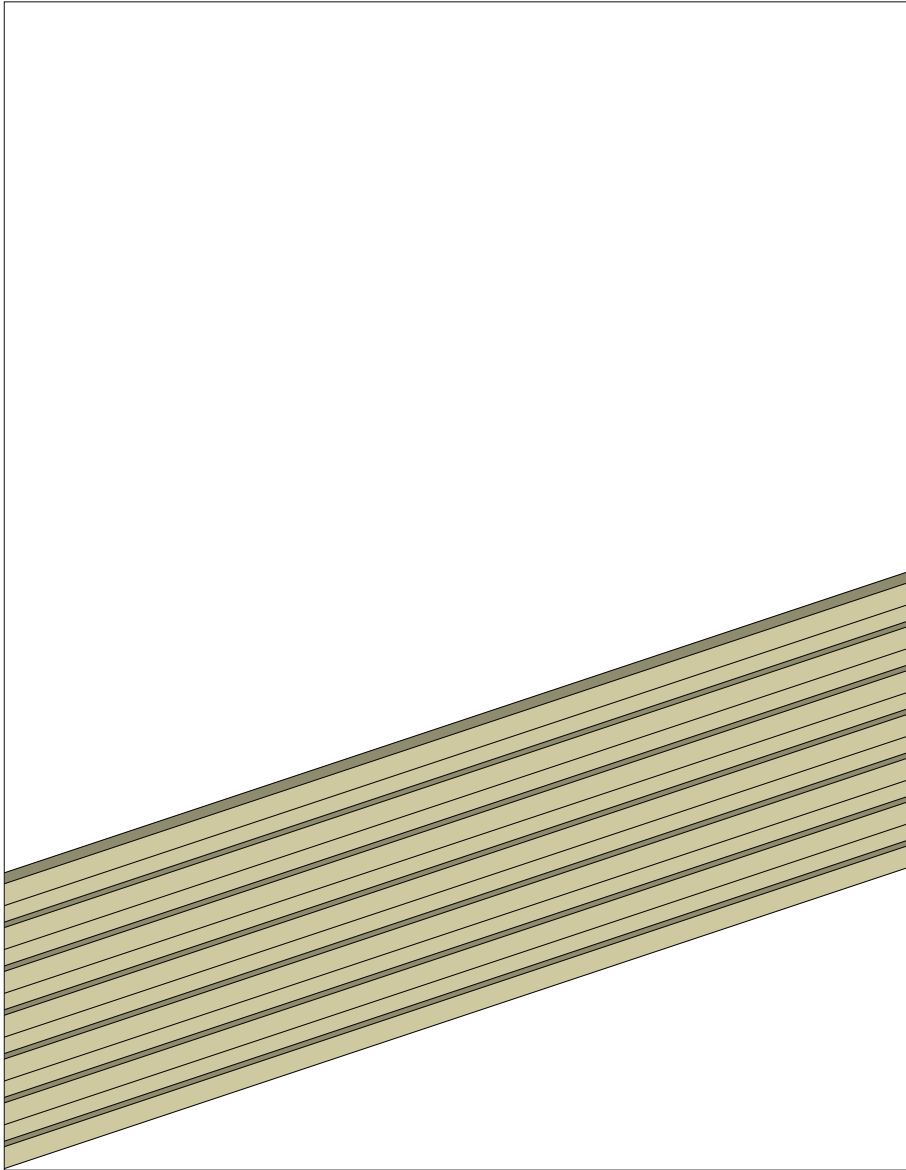


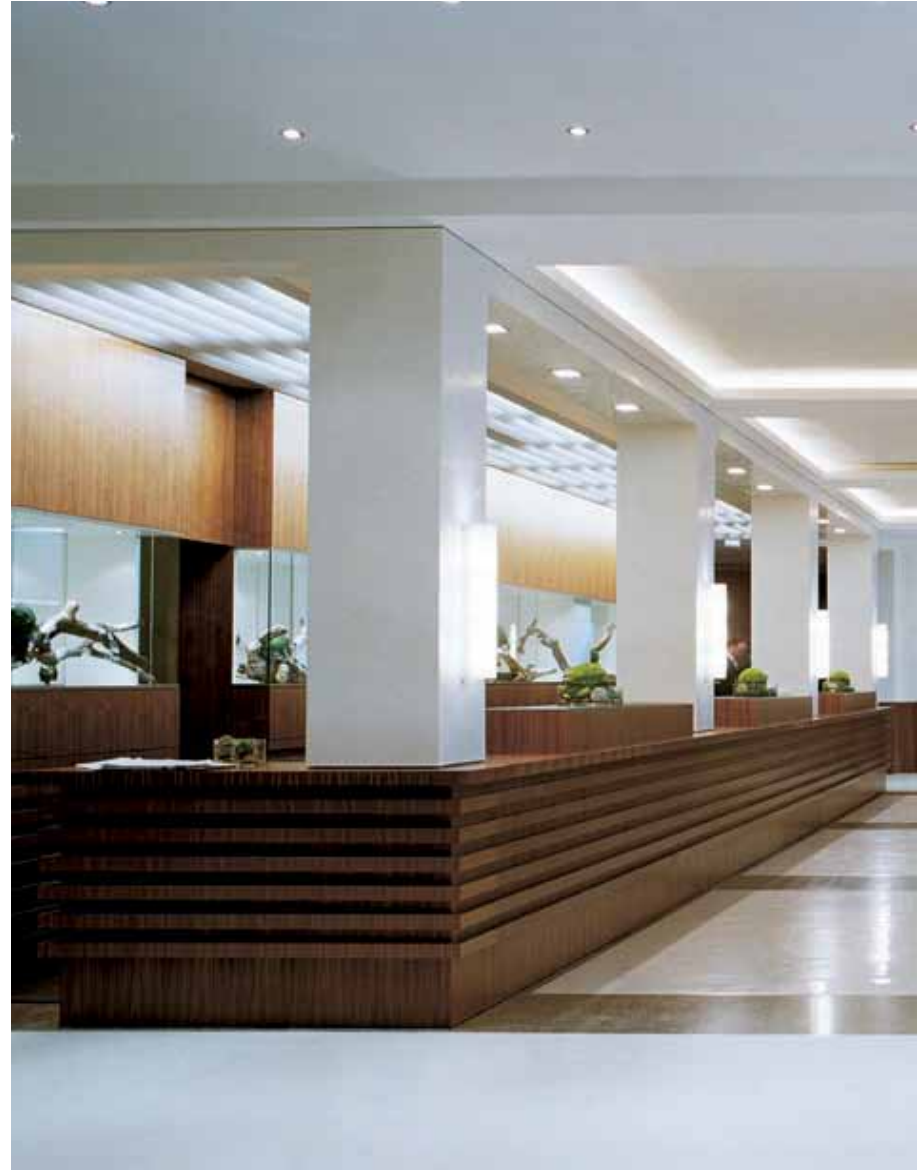
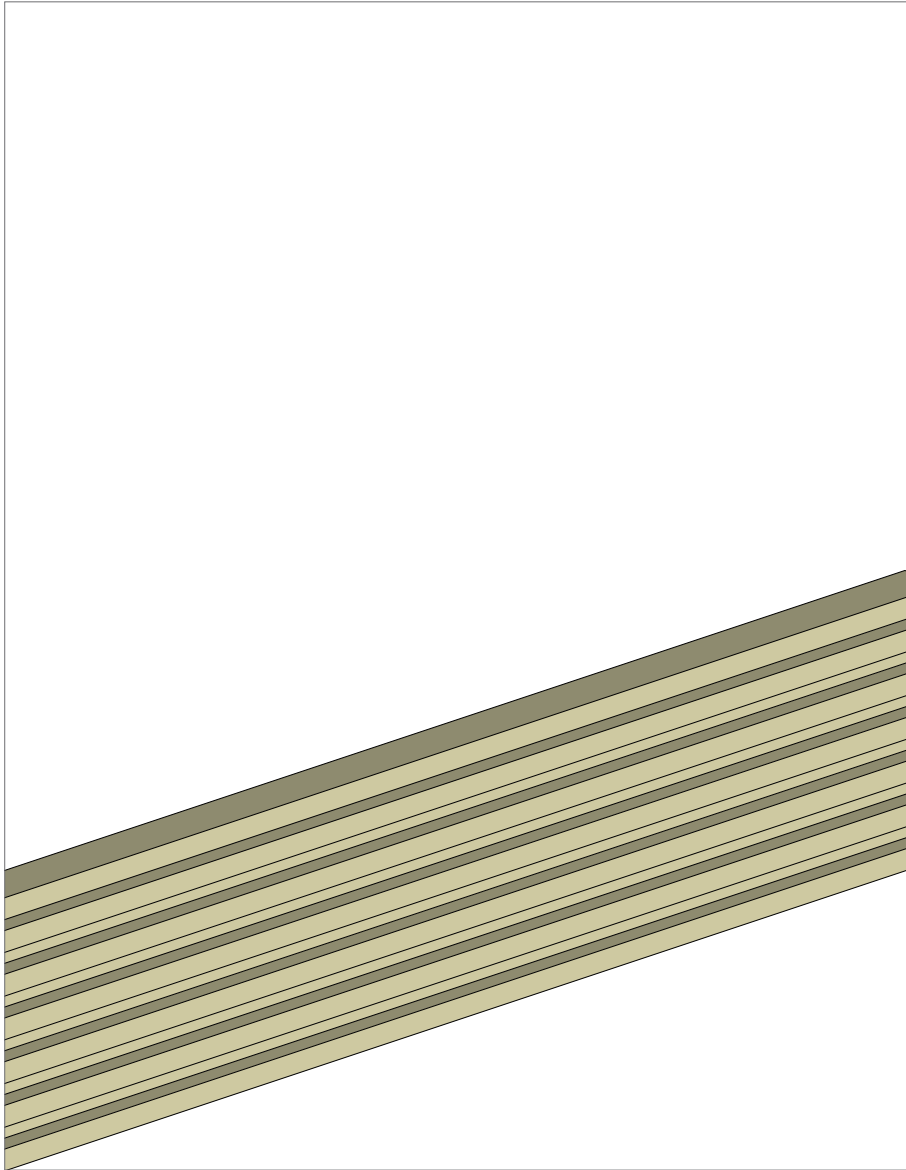




MADE UP AND MADE OVER
Concorde Hotel Berlin

Kleihues + Kleihues



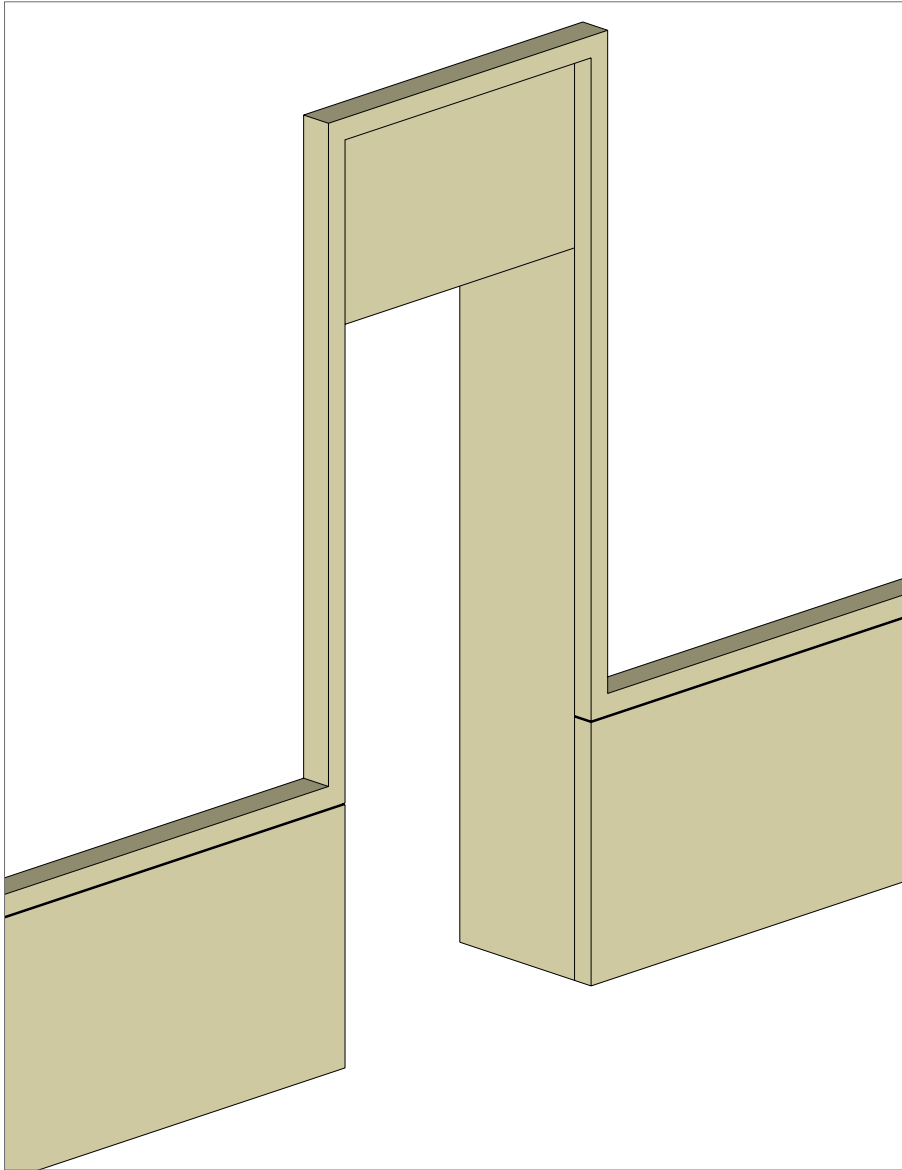


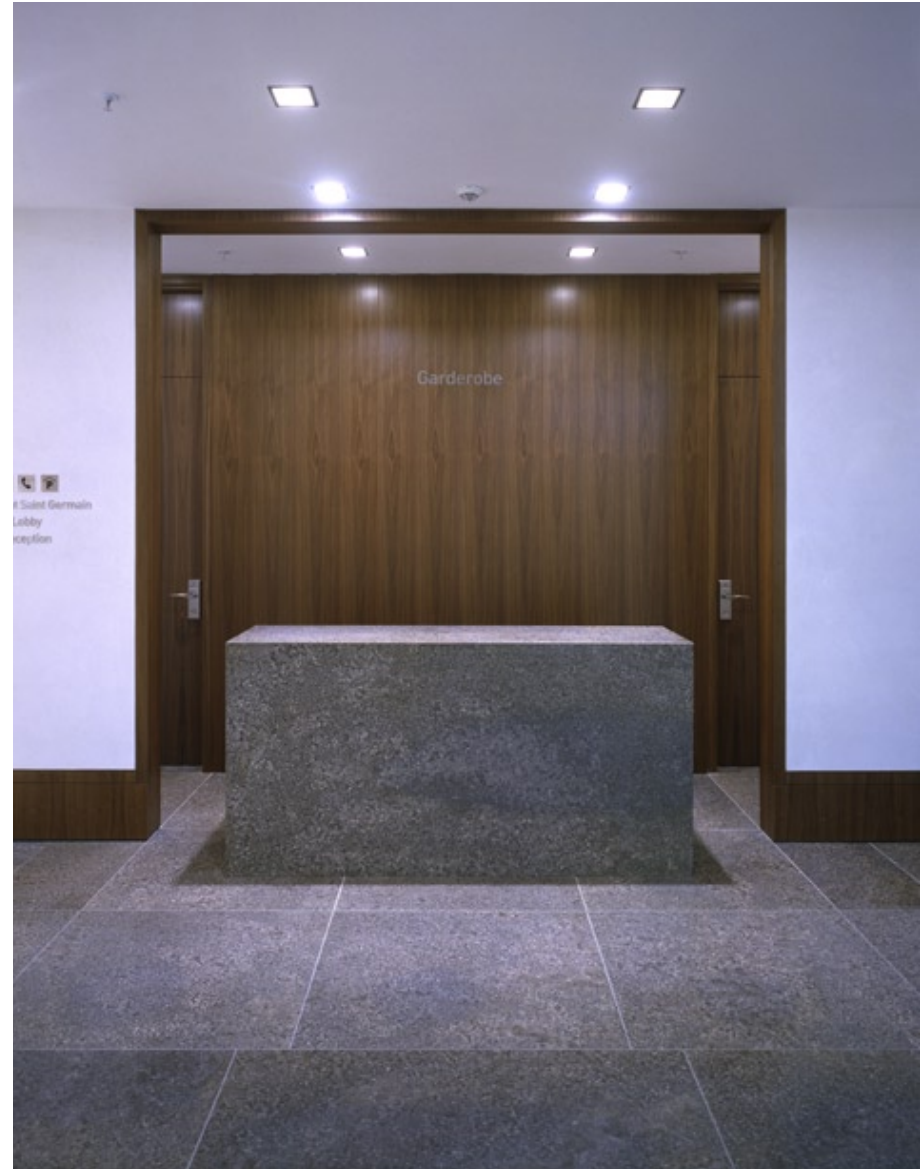
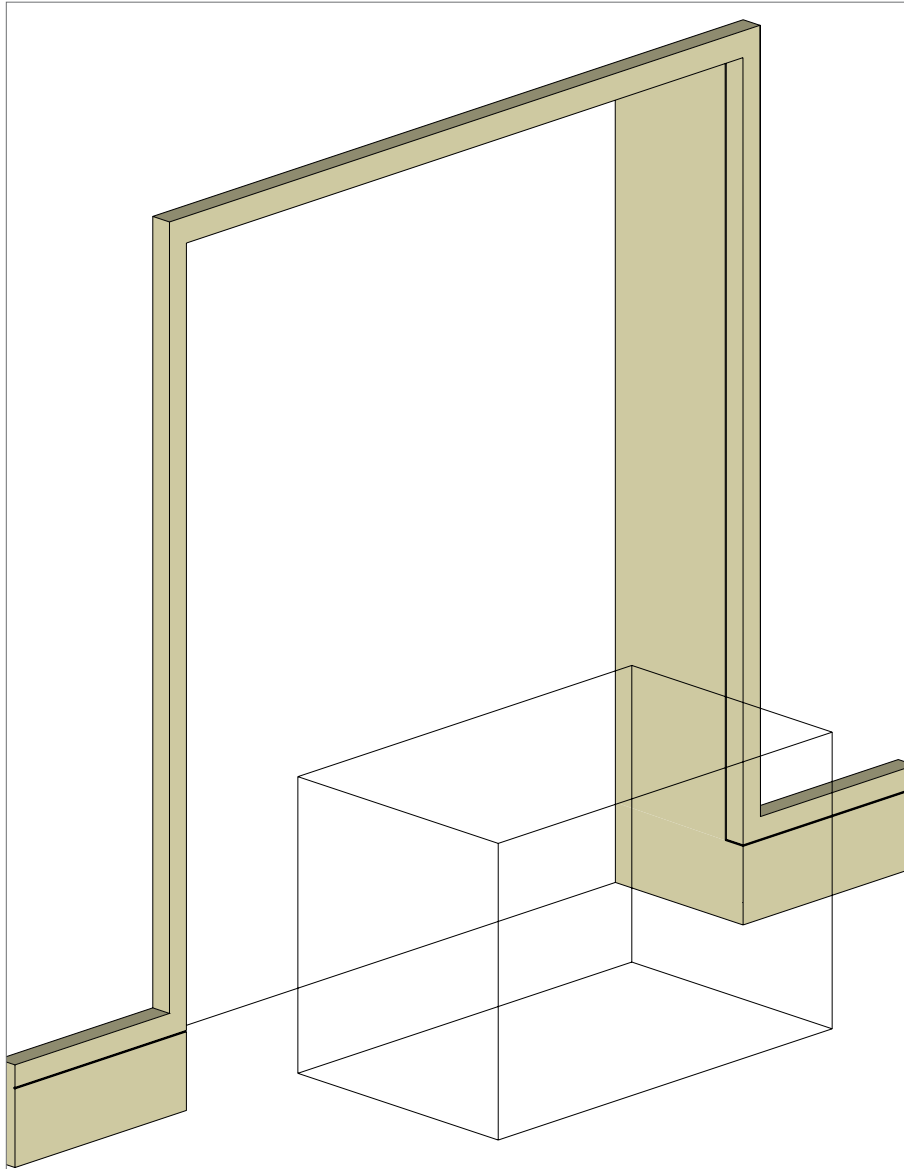
Hotel Concorde

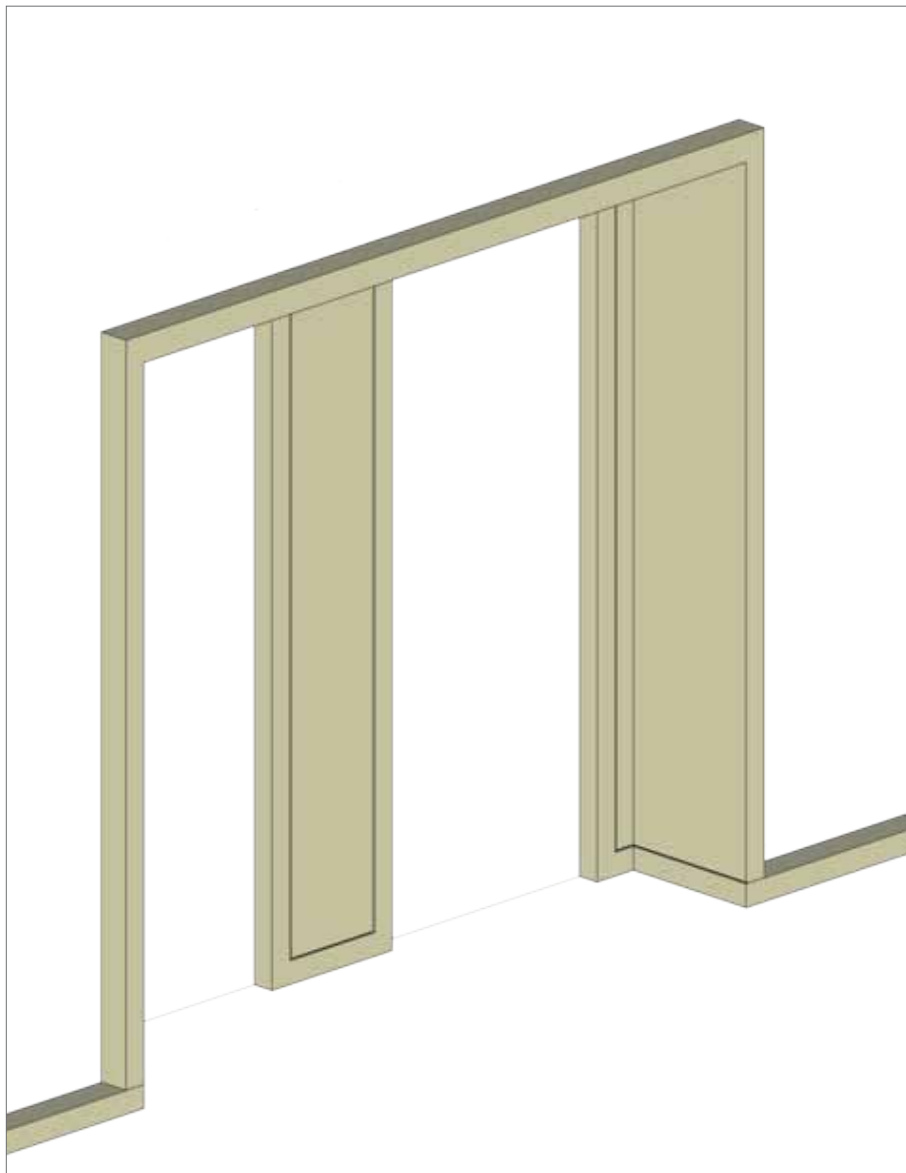
MADE UP AND MADE OVER
Concorde Hotel Berlin

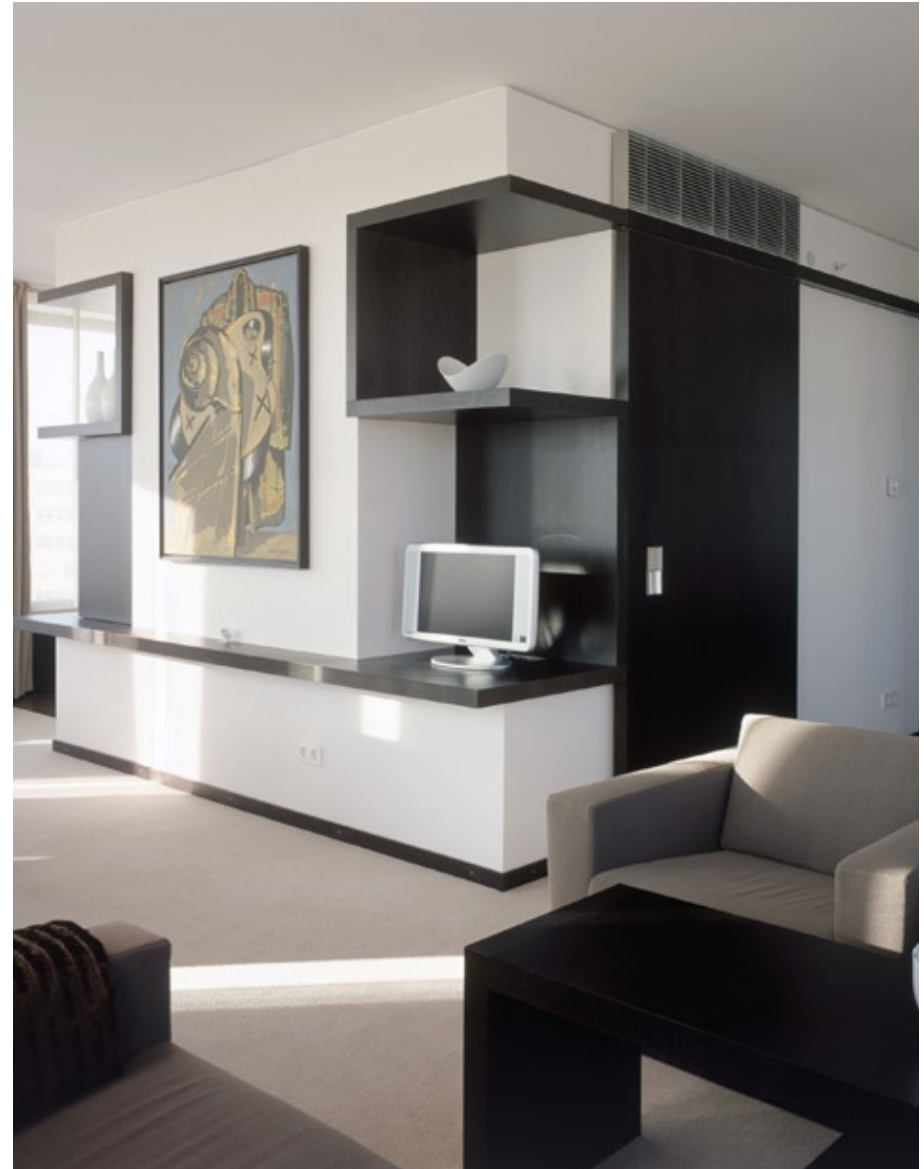
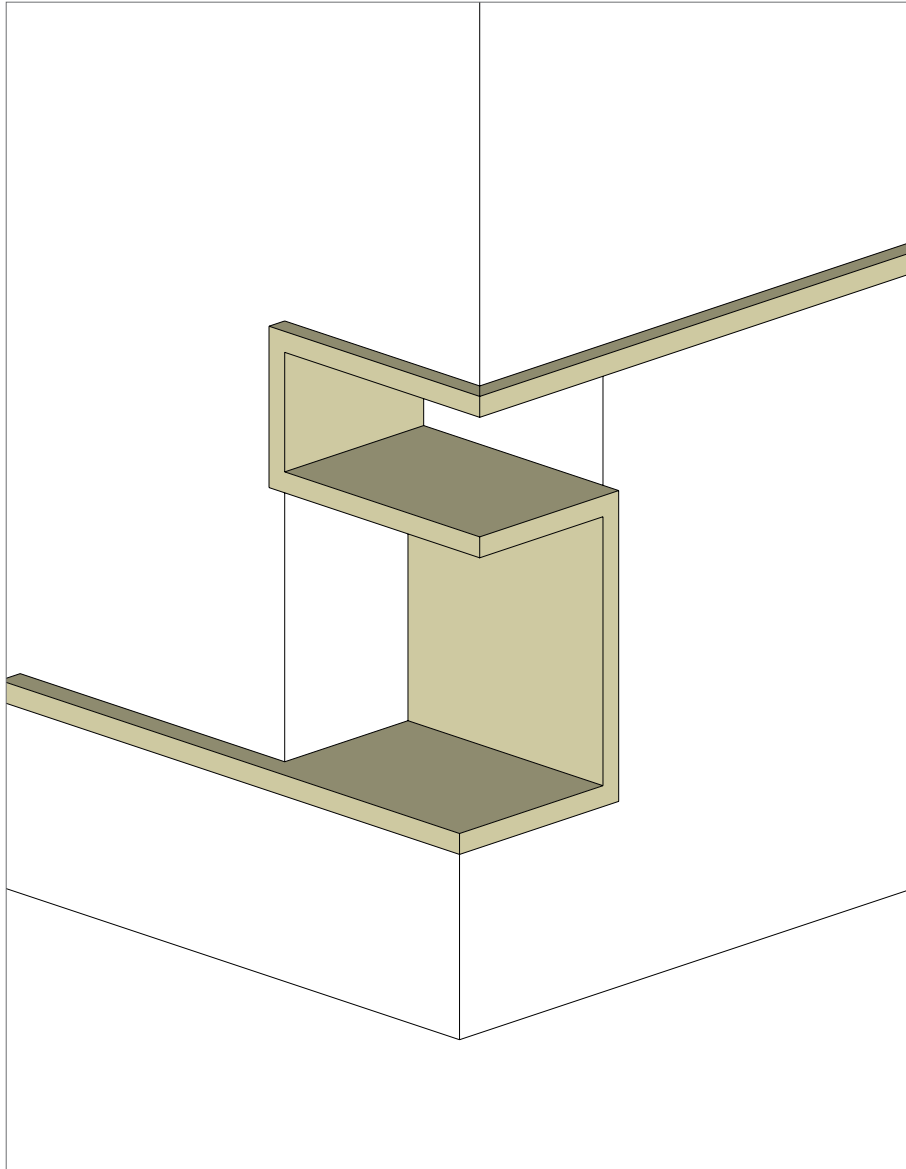
Linienführung Aufzugslobby

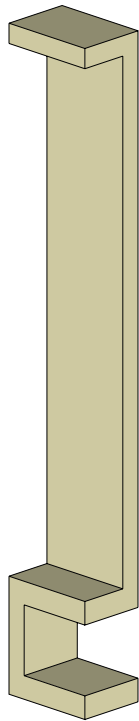
Kleihues + Kleihues

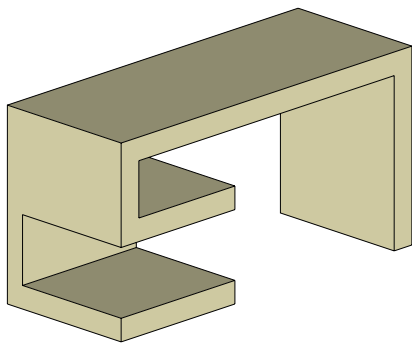






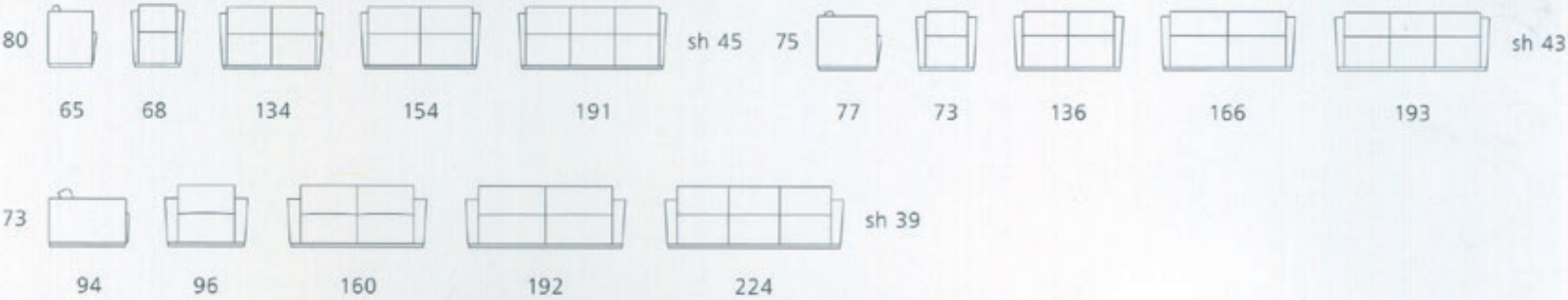








ELTON 406/407/408.



MADE UP AND MADE OVER
Concorde Hotel Berlin

Kleihues + Kleihues



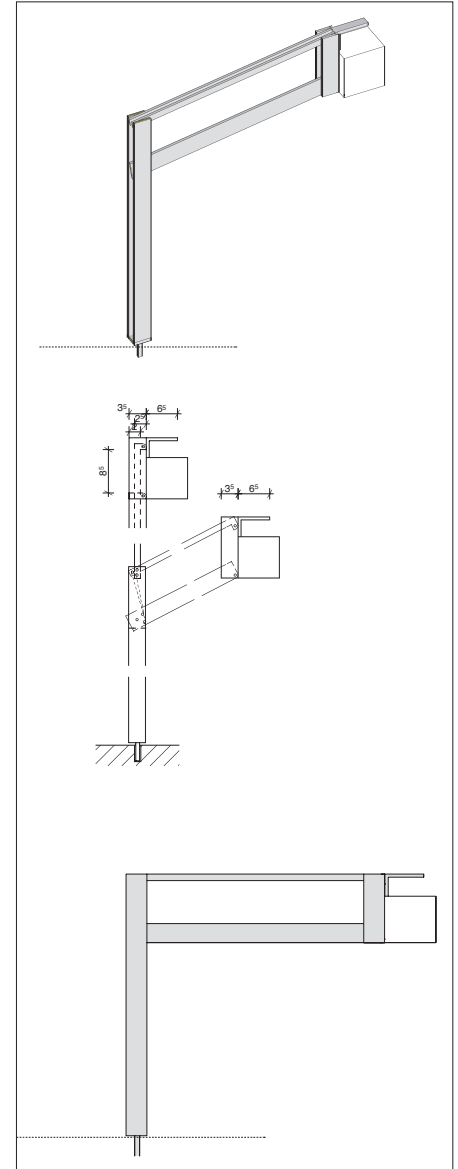






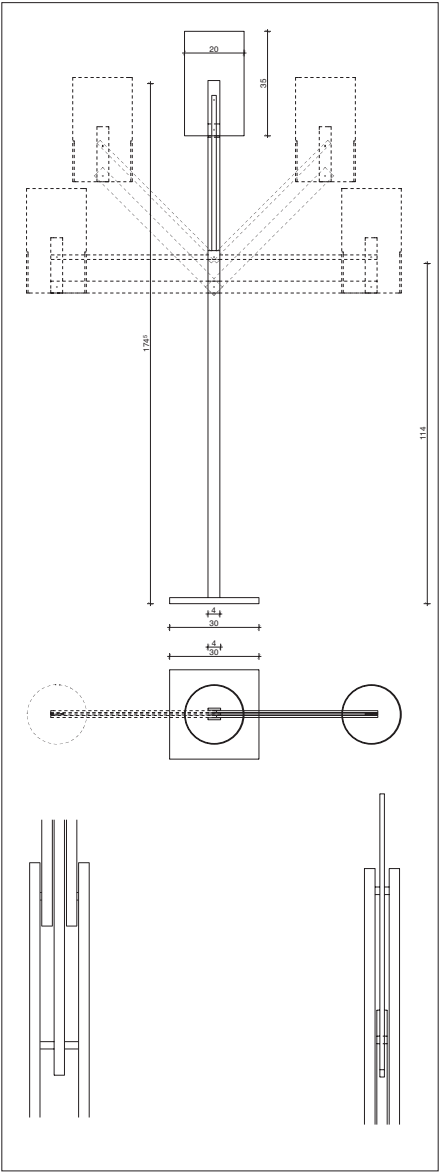
ELTON.

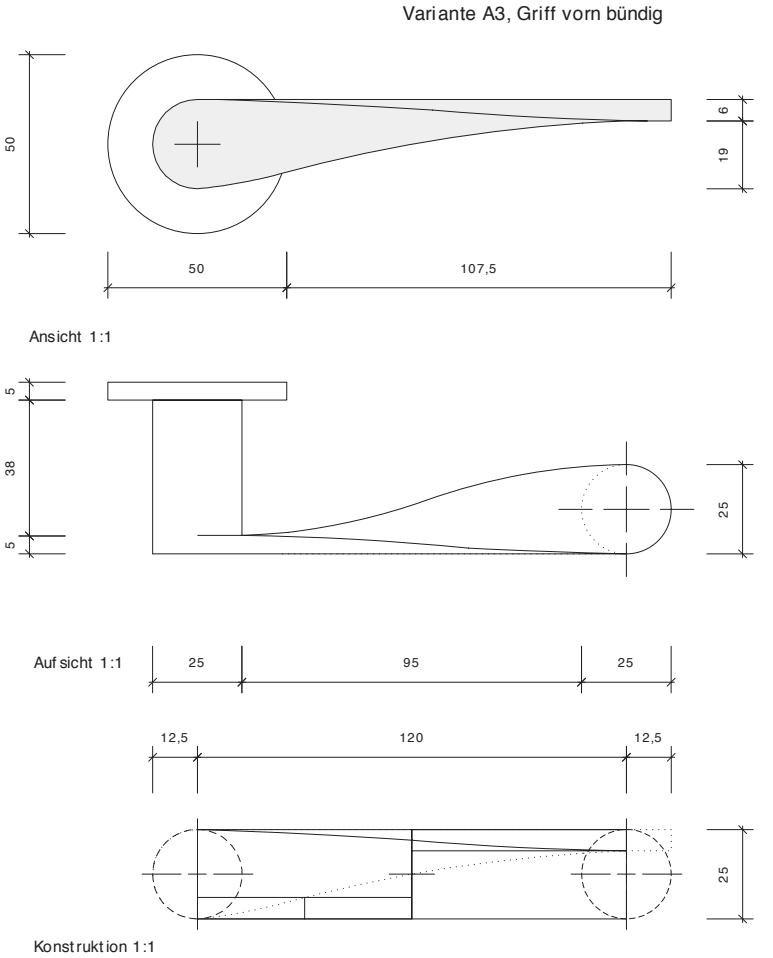
WALTER KNOLL



MADE UP AND MADE OVER
Concorde Hotel Berlin

Kleihues + Kleihues









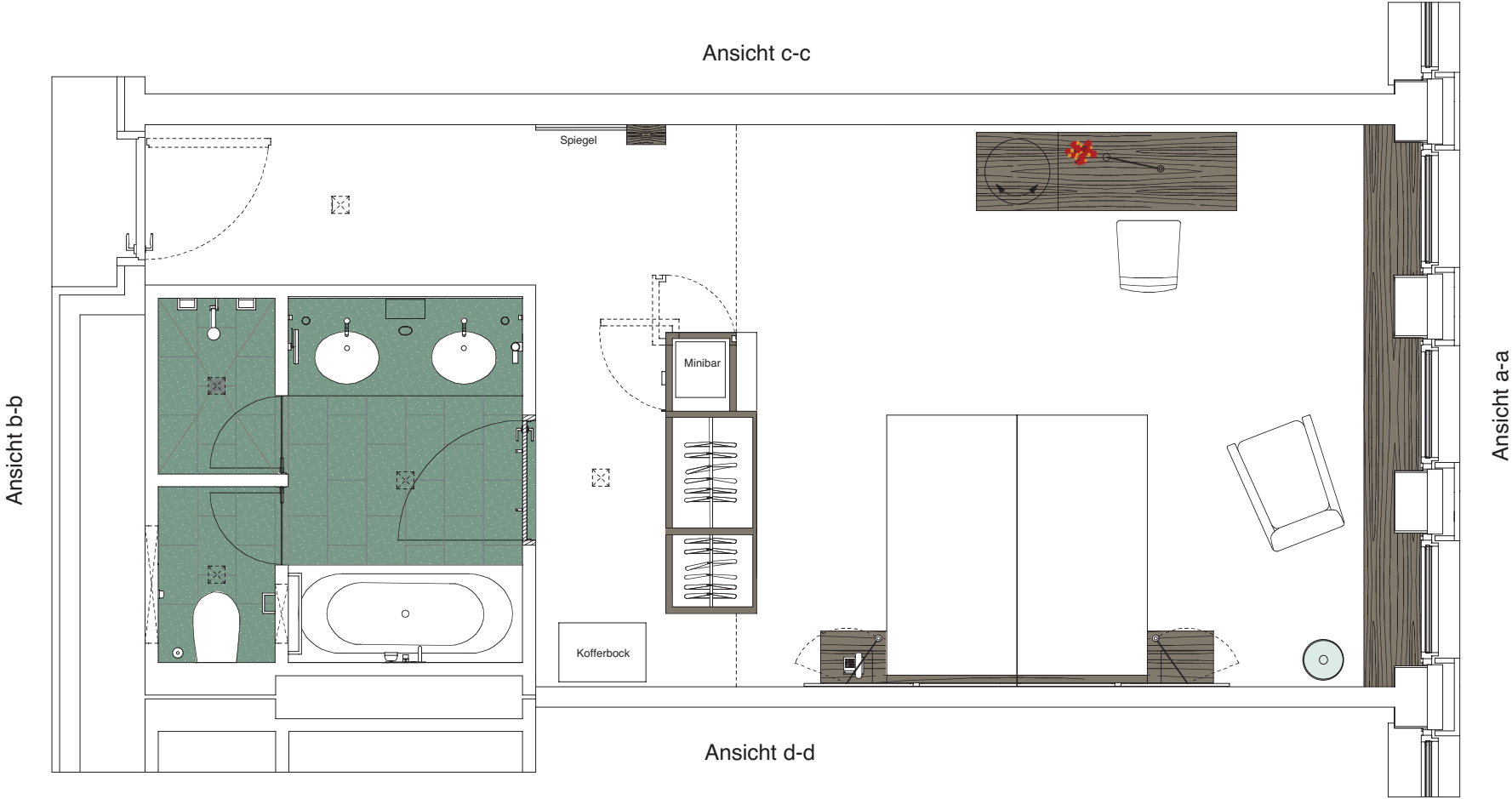










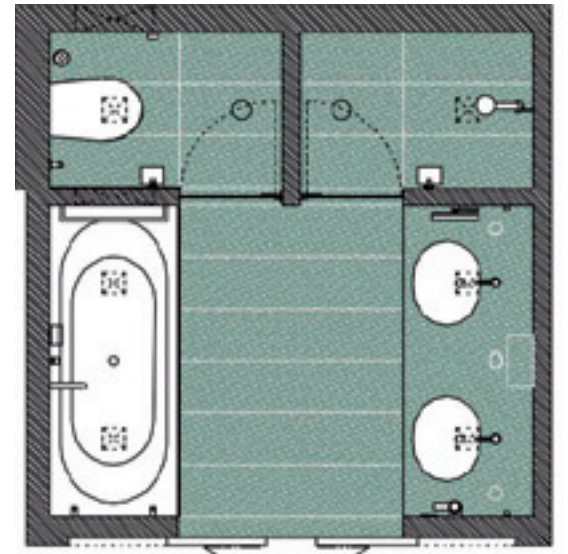






MADE UP AND MADE OVER
Concorde Hotel Berlin

Kleihues + Kleihues







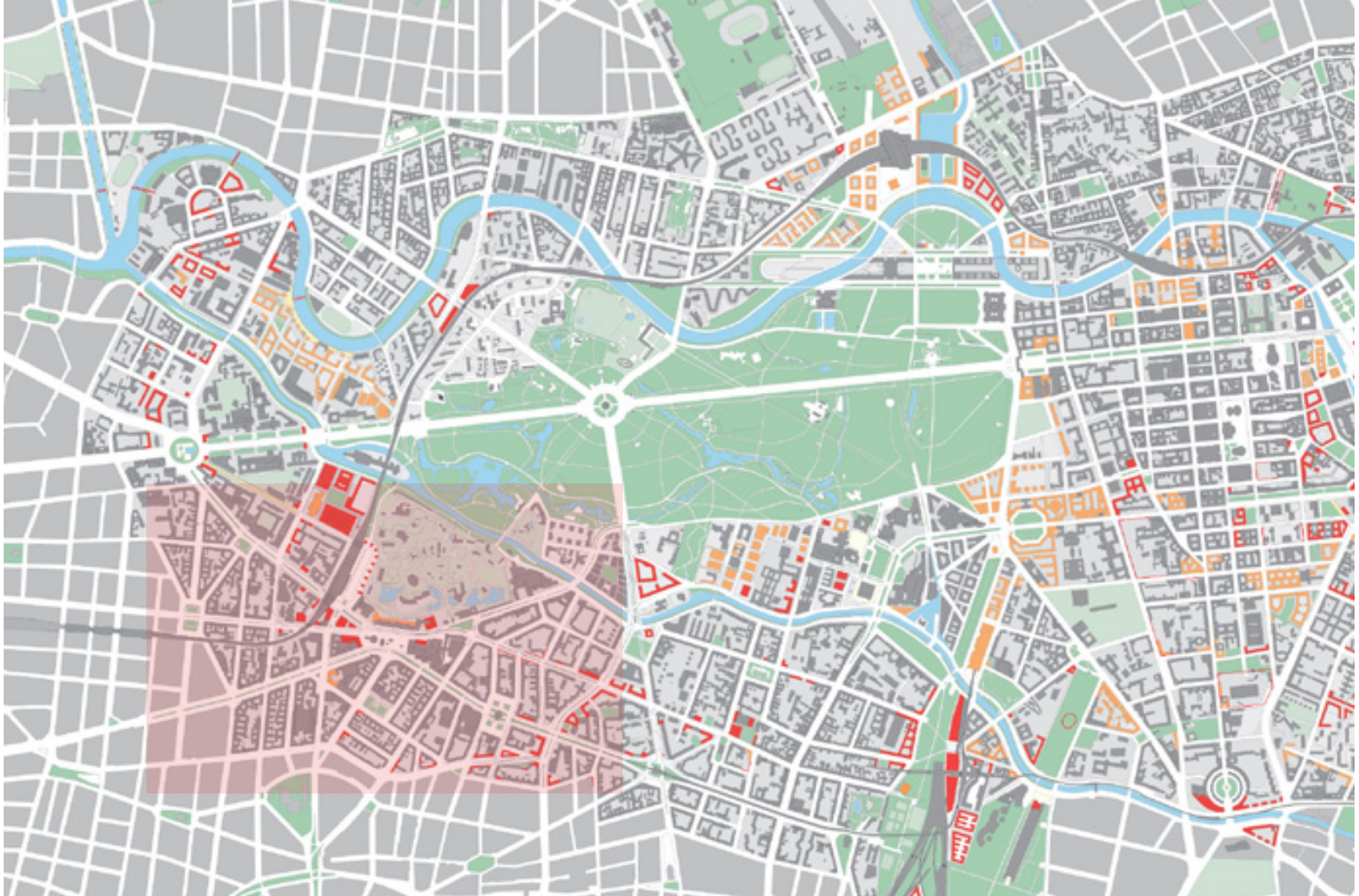






MADE UP (3) - H10 HOTEL BERLIN



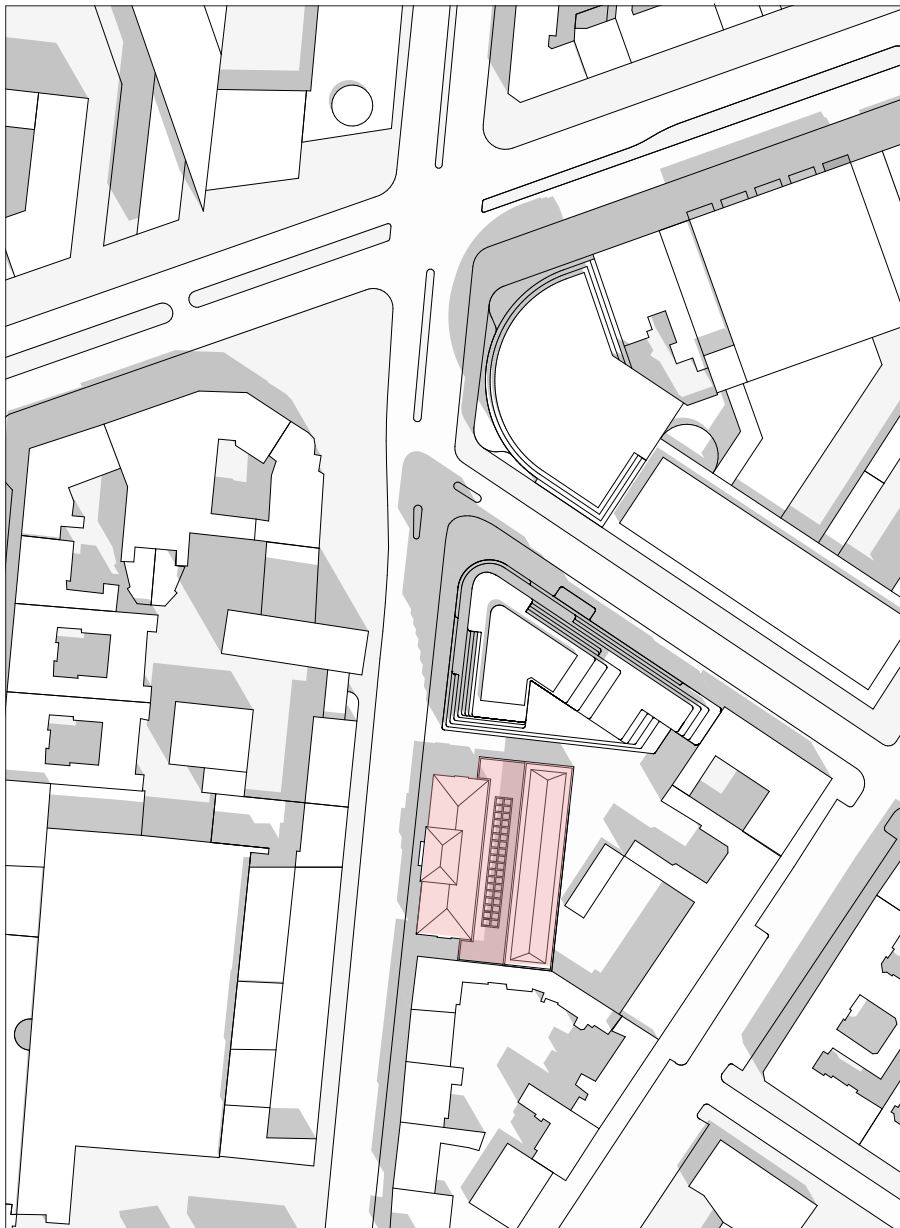




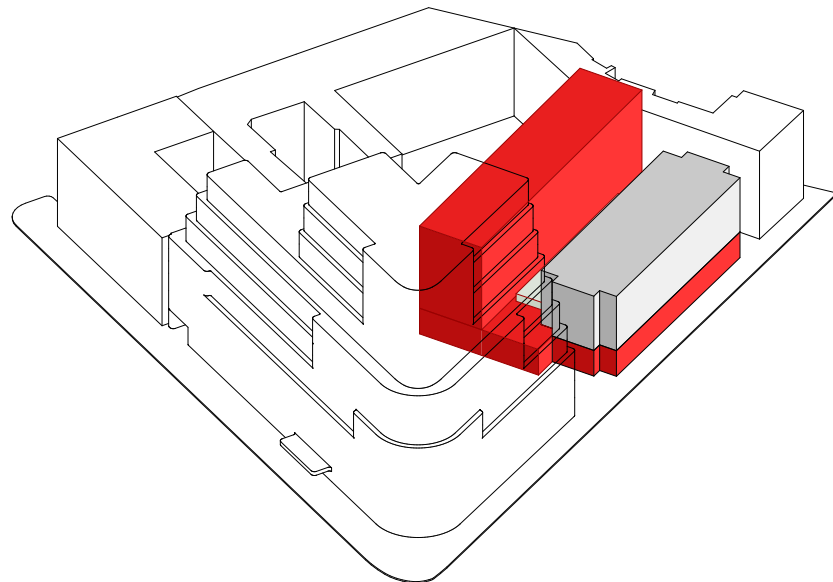
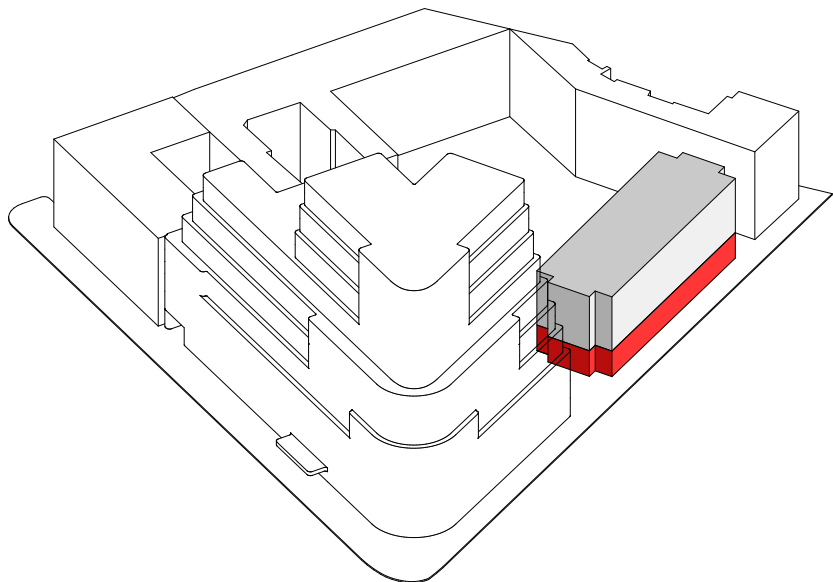
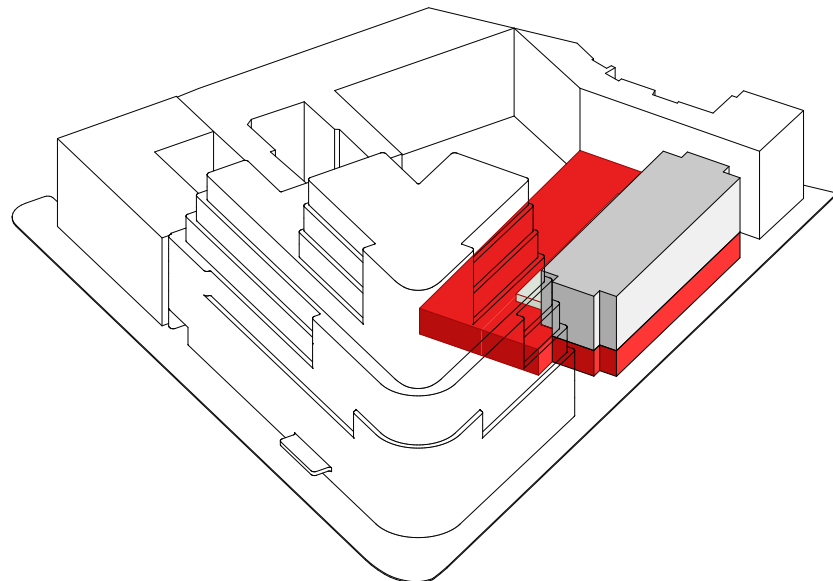
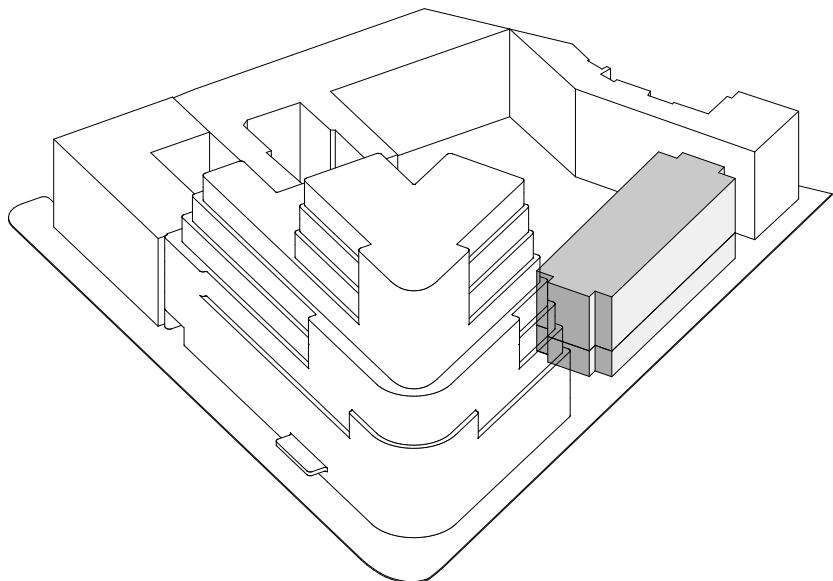
MADE UP AND MADE OVER
H10 Hotel

Kleihues + Kleihues





Adresse	Joachimstaler Straße 31-32 10719 Berlin
Bauherr	Blue Stone Berlin GmbH
Planung	2008
Realisierung	2008-2011
BGF	16.600 m ²
Baukosten	20 Mio.
Nutzung	Hotel
Zimmer	199



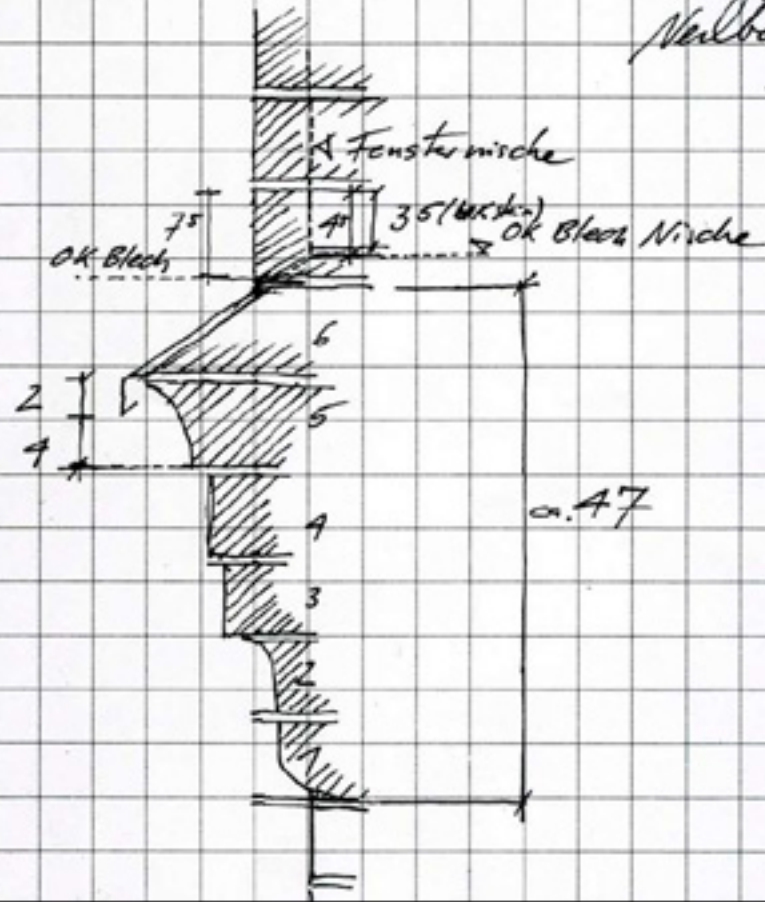
MADE UP AND MADE OVER
H10 Hotel

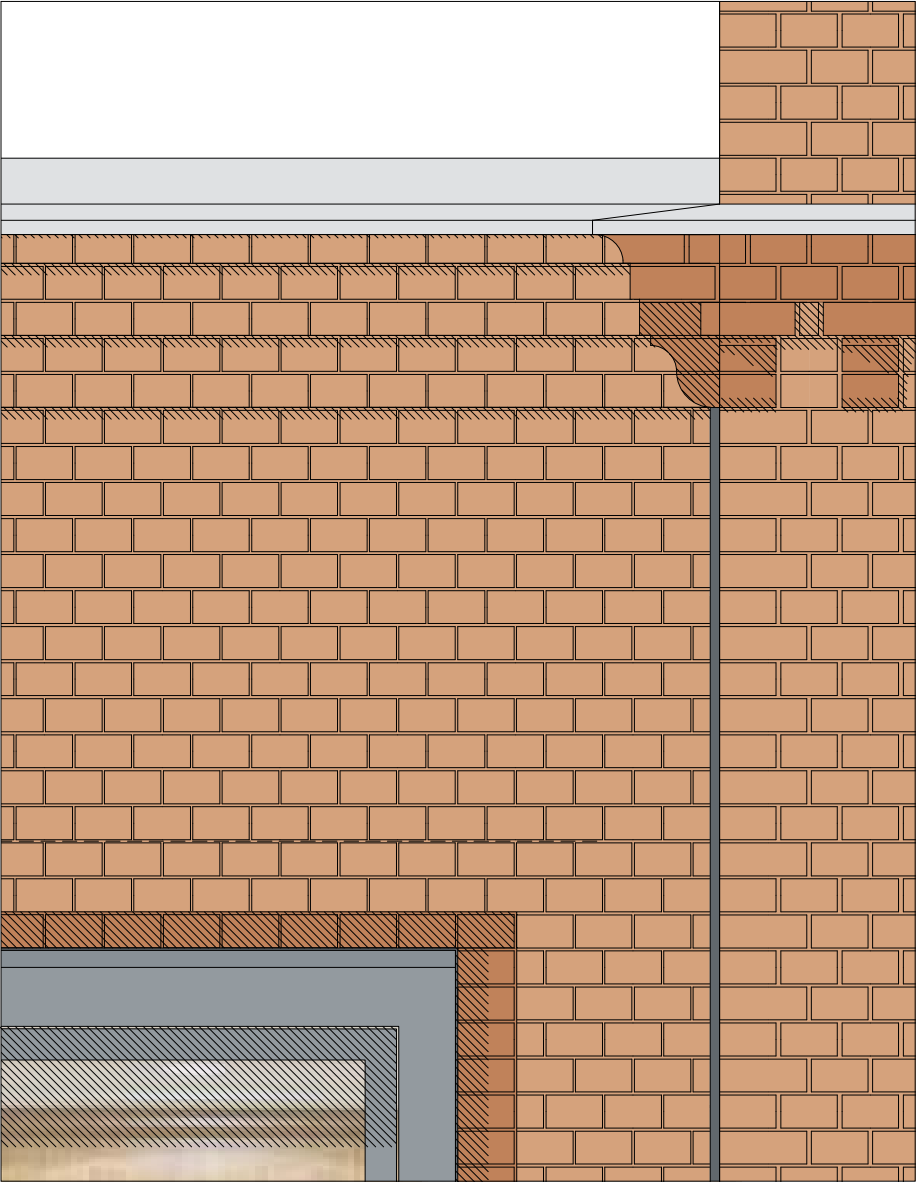
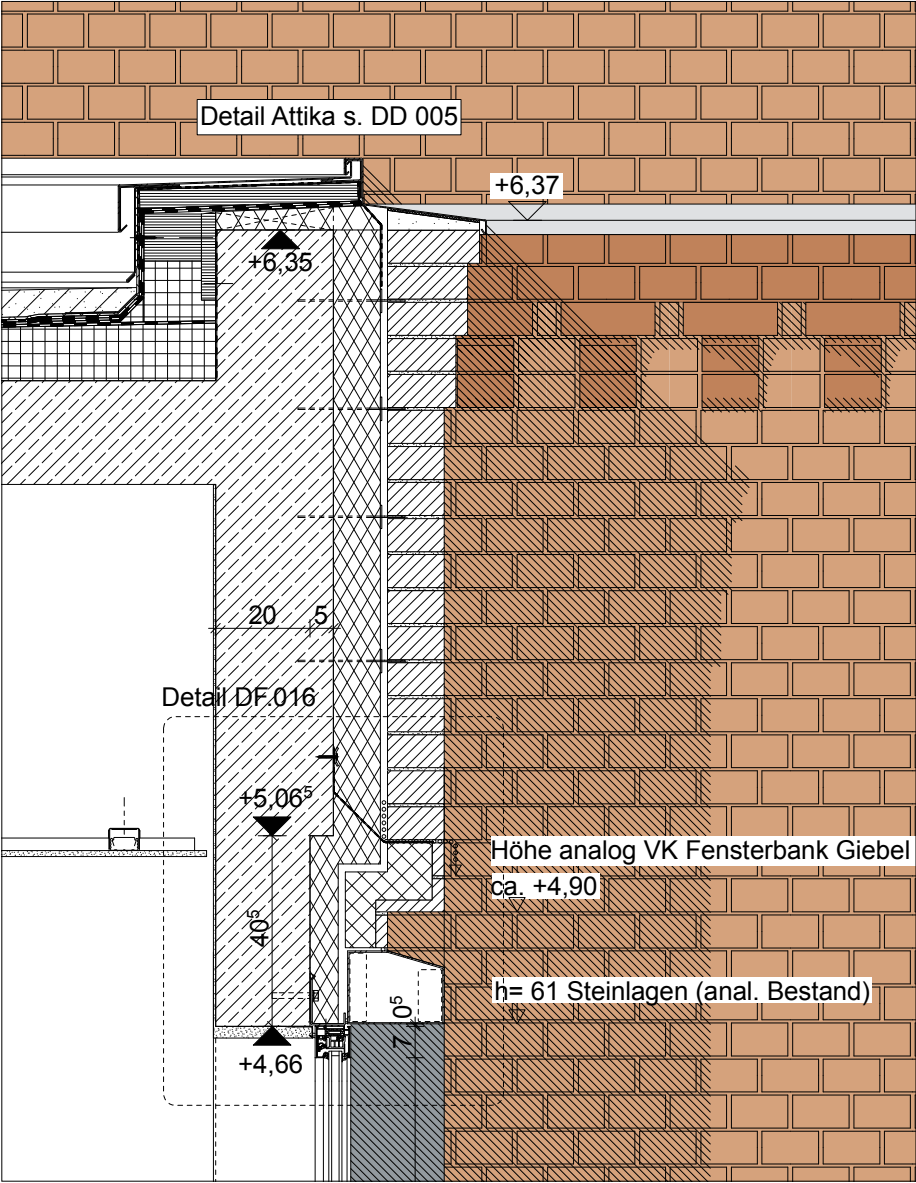
Kleihues + Kleihues

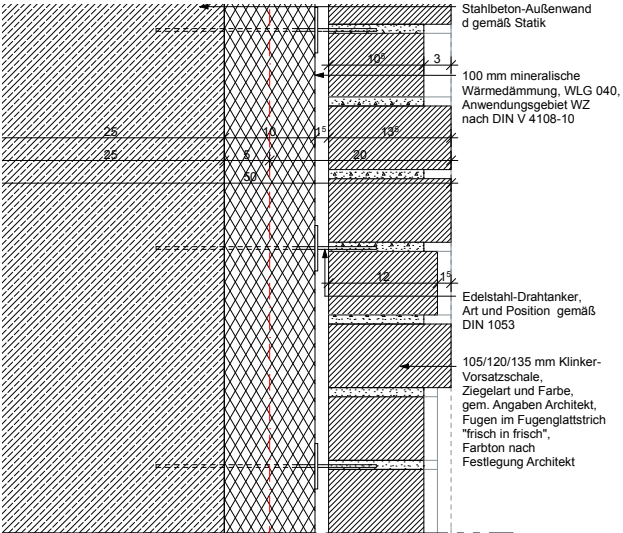




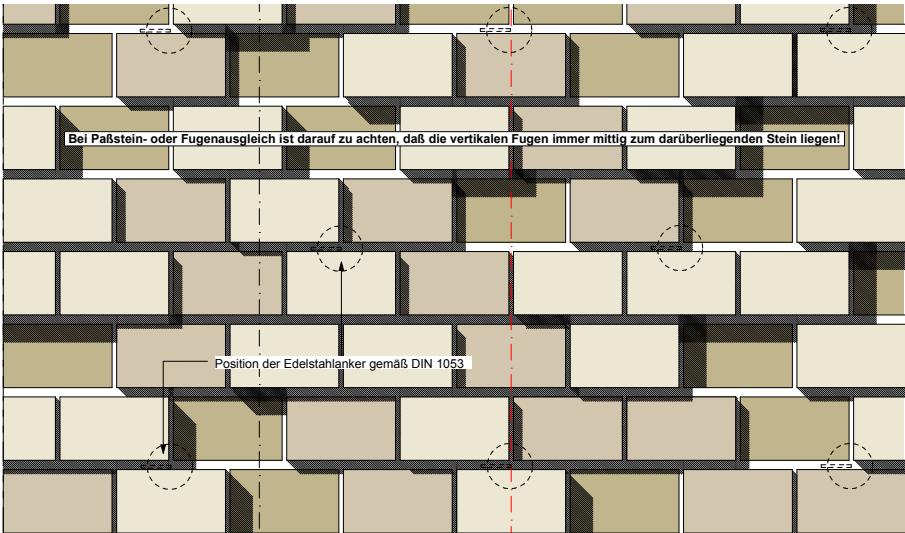
① Aufnahmegerätstand AB (OK ca. 6.37
analog Ablesbar
Neubau)







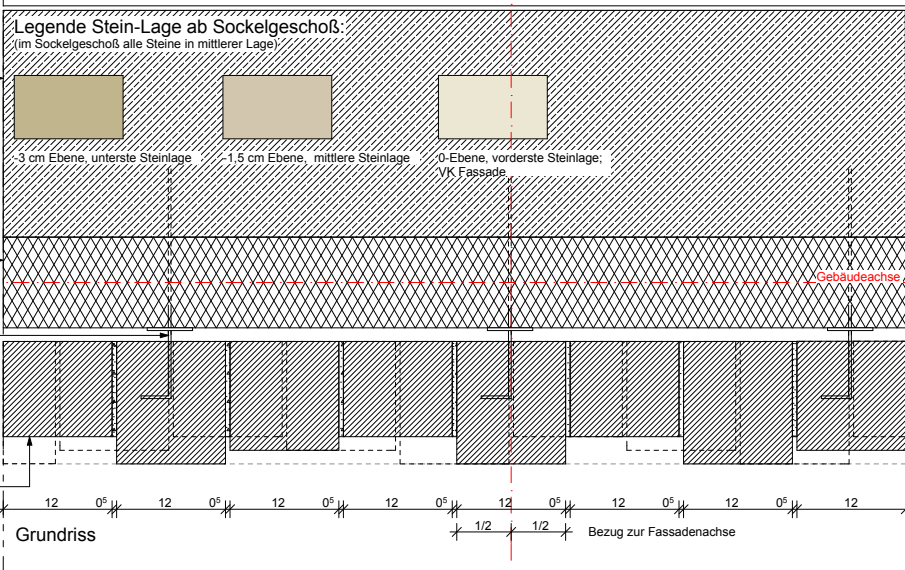
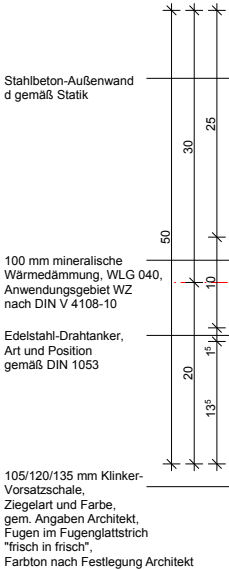
Schnitt A-A



Ansicht

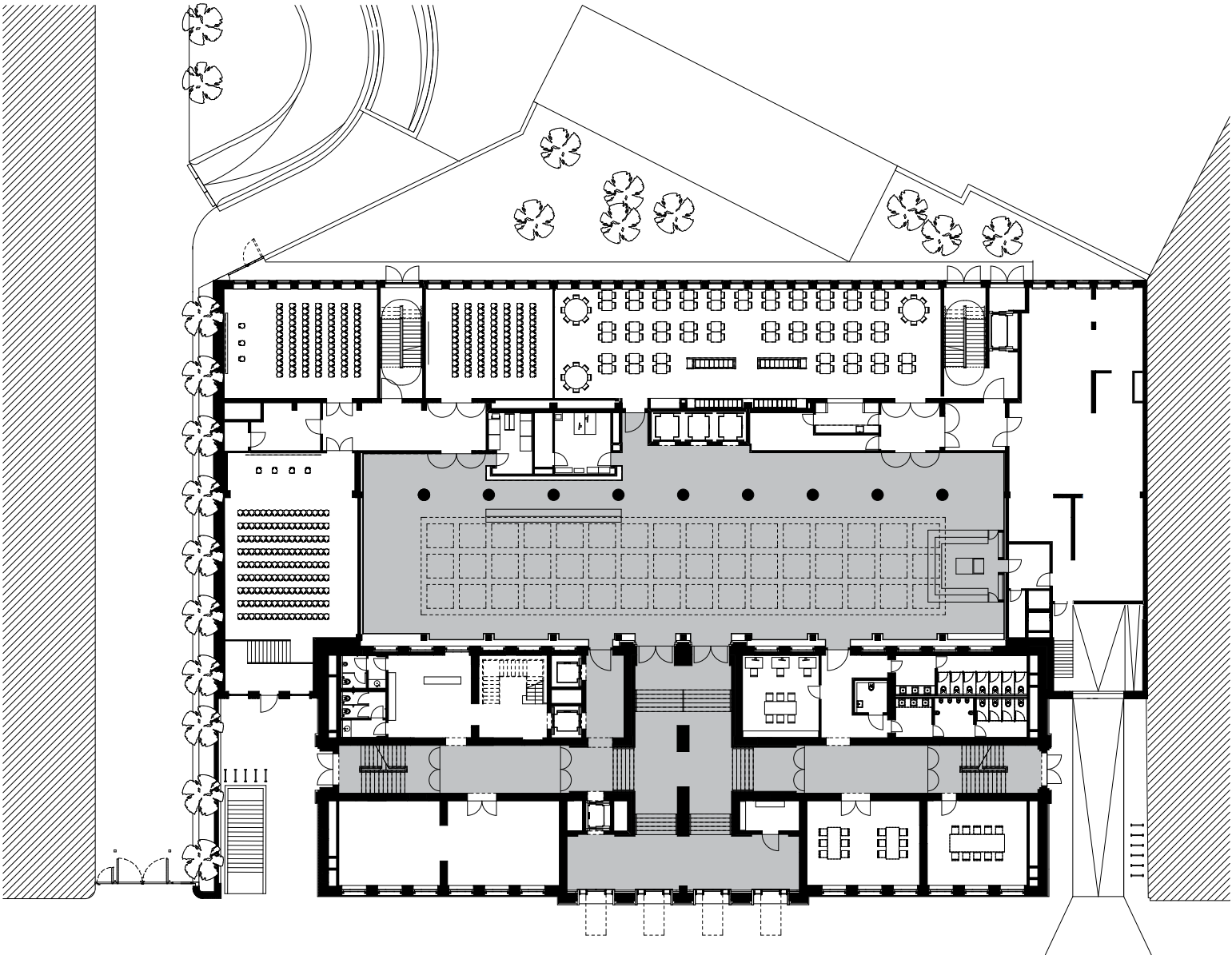


Foto Fassadenmuster









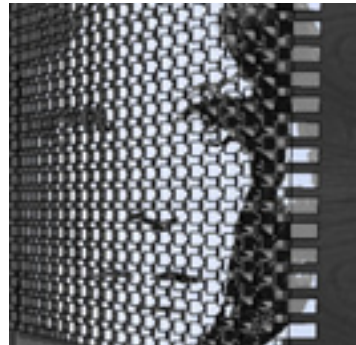




MADE UP AND MADE OVER
H10 Hotel

Kleihues + Kleihues





MADE OVER - SOFITEL HOTEL BERLIN



S O F I T E L
L U X U R Y H O T E L S

